



System Requirements

USB version Windows 10 or higher
1 GHz CPU or faster
512 MB RAM or higher

Web version Internet Explorer 9 or higher
Any browser

App version iOS & Android OS



KR-CONTM

The Single Solution for IMO Conventions

English

USB version | Web version | App version

KR-CON

The Single Solution for IMO Conventions



36, Myeongji ocean city 9-ro, Gangseo-gu, Busan, Korea, 46762

Tel +82-70-8799-8335 **Fax** +82-70-8799-8339 **Mail** krcon@krs.co.kr **Web** <http://krcon.krs.co.kr>

05 KR-CON
Introduction

08 Key
Functions

17 Subscription
Fee

19 Document
List



KR-CON



The Single Solution for IMO Conventions



KR-CON, developed by Korean Register is a comprehensive IMO Database program containing IMO Conventions, Codes, Resolutions and Circulars in English and Korean.

With the ever increasing volume of new regulations, we are regularly being asked to help our shipowner members interpret the rules they have to comply with. To have all the statutory regulations and advisory IMO notices all in one place, regularly updated and easy to search KR-CON has been extremely useful and has helped us in our daily work enormously.

Mr. Karl Lumbers
*Director of Loss Prevention
UK P&I Club*



KR-CON

KR-CON Introduction

Fit-For-Purpose

IMO Convention Database

- KR-CON is a portable electronic database containing the vast array of IMO instruments. It enables users to navigate the maze of IMO instruments swiftly and accurately through a variety of user friendly functions.
- Users can browse the contents with the click of a mouse, and identify the regulations applicable to an individual ship simply by inputting its details. An intelligent search function allows specific contents to be easily and quickly found.

Global Users

KR-CON Beneficiary



Maritime Administrations
(PSCO)



Classification Societies



Ship-builders



Service Suppliers



Shipping Companies and
Seafarers



Training Institutes



Academic Institutions

Easy Access

How to use KR-CON ?

- USB version runs directly from a USB memory stick without any need for installation or internet connection.
- Web version (<http://krcon.krs.co.kr/>) is accessible via a standard web browser
- App version is available now on the App Store(iOS) and Google Play Store(Android OS) for smart devices.

IMO Approval

IMO approval of the carriage of publications in electronic form

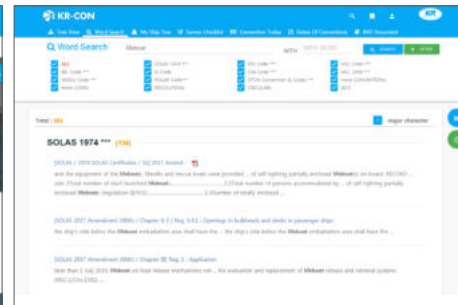
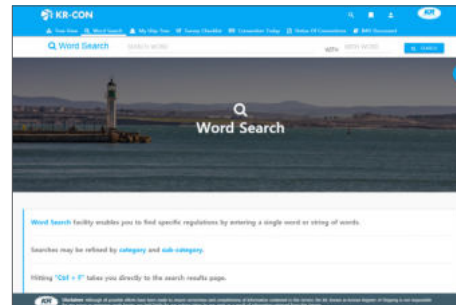
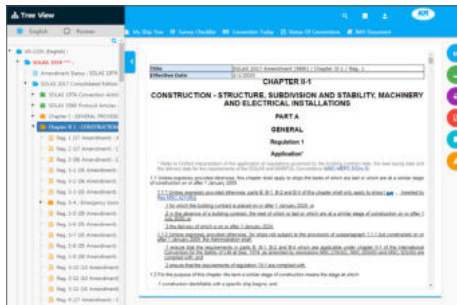
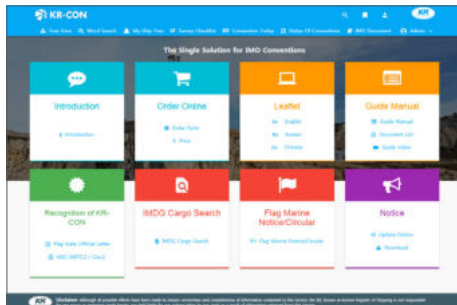
- The Marine Environment Protection Committee (MEPC) and the Maritime Safety Committee (MSC) have approved MSC-MEPC.2/Circ.2 which allows vessels to carry electronic media onboard instead of hard copy documents. This means that KR-CON can now be used onboard ship.
- KR-CON has also been recognized as an electronic version of IMO instruments by the 29 maritime administrations including Panama, Marshall, Liberia, Cyprus, Australia, St. Vincent and the Grenadines, Isle of Man, Republic of Korea and others.

KR-CON Key functions

📱 KR-CON USB

🌐 KR-CON Web

📱 KR-CON APP



Tree View Structure

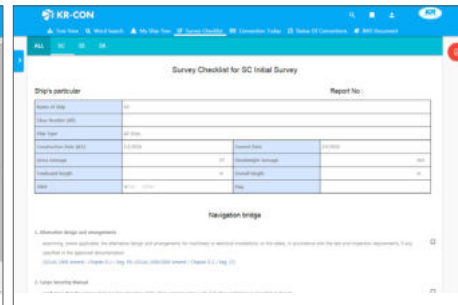
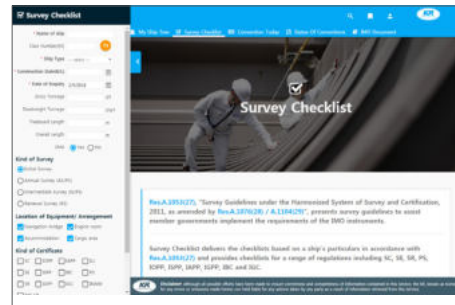
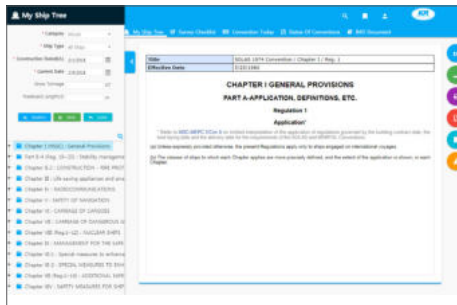
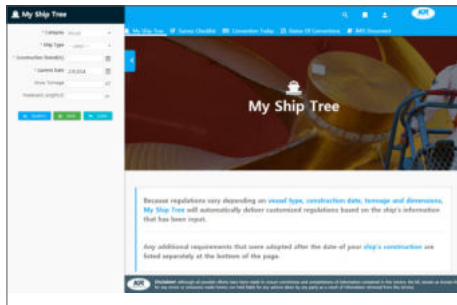


- The latest consolidation & all previous amendments
 - 37 IMO Conventions : SOLAS, MARPOL, MLC, STCW, BWM, etc.
 - 36 IMO Codes : ISM, ISPS, LSA, FSS, IBC, IGC, IMDG, etc.
 - 13 Resolutions : Assembly, MSC, MEPC, FAL, LEG, SOLAS Conference
 - 9 Circulars : MSC, MEPC, MSC-MEPC, LL, II, STCW, BC, BWM, FAL, FP and LLMC.
- Others : UNCLOS, IACS UI, ILO Conventions
- Amendment status table & amendment tracking system
- Headline information for every regulation
- Visual materials linked to the text
- Hyperlinks to related documents

Word Search



- Clear word search by a single word or tring of words
- Refined by category and sub-category
- “Ctrl + F” quick search provided



My Ship Tree

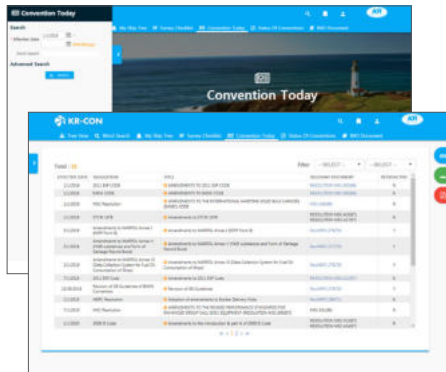


- Customized regulations based on a ship's particular (Ship type, effective date, contract date, construction date, delivery date, etc.)
- Retroactive requirements
- Flexible data management system (Save & Load)
- SOLAS, MARPOL, ICLL, IGC, IBC, HSC, MODU

Survey Checklist



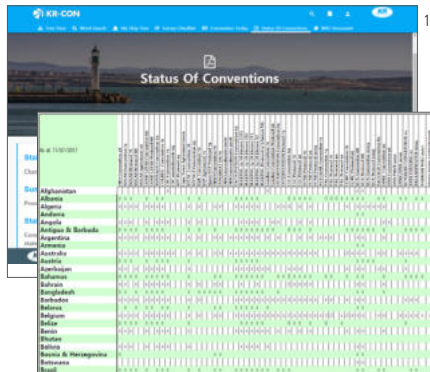
- Systematic survey checklists according to Res.A.1120(30), Survey Guidelines under the HSSC, 2017 as amended.
- Customized checklists based on ship's particular (K/L, Ship Type, etc.)
- Survey checklists for SC, SE, SR, IOPP, ISPP, IGPP, IAPP, IBC, IGC, ILL, PS, IBWM and POLAR



Convention Today



- Summary of newly adopted IMO documents
- Useful searching functions (Ship type, effective date, contract date, construction date, delivery date, etc.)



Status of Conventions



- List of IMO Conventions ratified by the member states
- Number of ratifications for treaties and the corresponding G/T of the world's merchant fleet
- Comprehensive information on the status of IMO treaties
- Provided from IMO official website.

13

14

Doc No	Title or Description	Date	Comments
MSC.1/Circ.1	ANY OTHER BUSINESS	10/10/17	
MSC.1/Circ.2	ANY OTHER BUSINESS	10/10/17	
MSC.1/Circ.3	ANY OTHER BUSINESS	10/10/17	
MSC.1/Circ.4	RESOLUTION FOR THE 10TH MEETING OF THE SUB-COMMITTEE ON SHIP SAFETY	10/10/17	
MSC.1/Circ.5	RESOLUTION FOR THE 10TH MEETING OF THE SUB-COMMITTEE ON SHIP SAFETY	10/10/17	
MSC.1/Circ.6	RESOLUTION FOR THE 10TH MEETING OF THE SUB-COMMITTEE ON SHIP SAFETY	10/10/17	
MSC.1/Circ.7	RESOLUTION FOR THE 10TH MEETING OF THE SUB-COMMITTEE ON SHIP SAFETY	10/10/17	
MSC.1/Circ.8	RESOLUTION FOR THE 10TH MEETING OF THE SUB-COMMITTEE ON SHIP SAFETY	10/10/17	
MSC.1/Circ.9	RESOLUTION FOR THE 10TH MEETING OF THE SUB-COMMITTEE ON SHIP SAFETY	10/10/17	
MSC.1/Circ.10	RESOLUTION FOR THE 10TH MEETING OF THE SUB-COMMITTEE ON SHIP SAFETY	10/10/17	
MSC.1/Circ.11	RESOLUTION FOR THE 10TH MEETING OF THE SUB-COMMITTEE ON SHIP SAFETY	10/10/17	
MSC.1/Circ.12	RESOLUTION FOR THE 10TH MEETING OF THE SUB-COMMITTEE ON SHIP SAFETY	10/10/17	
MSC.1/Circ.13	RESOLUTION FOR THE 10TH MEETING OF THE SUB-COMMITTEE ON SHIP SAFETY	10/10/17	
MSC.1/Circ.14	RESOLUTION FOR THE 10TH MEETING OF THE SUB-COMMITTEE ON SHIP SAFETY	10/10/17	
MSC.1/Circ.15	RESOLUTION FOR THE 10TH MEETING OF THE SUB-COMMITTEE ON SHIP SAFETY	10/10/17	
MSC.1/Circ.16	RESOLUTION FOR THE 10TH MEETING OF THE SUB-COMMITTEE ON SHIP SAFETY	10/10/17	
MSC.1/Circ.17	RESOLUTION FOR THE 10TH MEETING OF THE SUB-COMMITTEE ON SHIP SAFETY	10/10/17	
MSC.1/Circ.18	RESOLUTION FOR THE 10TH MEETING OF THE SUB-COMMITTEE ON SHIP SAFETY	10/10/17	
MSC.1/Circ.19	RESOLUTION FOR THE 10TH MEETING OF THE SUB-COMMITTEE ON SHIP SAFETY	10/10/17	
MSC.1/Circ.20	RESOLUTION FOR THE 10TH MEETING OF THE SUB-COMMITTEE ON SHIP SAFETY	10/10/17	
MSC.1/Circ.21	RESOLUTION FOR THE 10TH MEETING OF THE SUB-COMMITTEE ON SHIP SAFETY	10/10/17	
MSC.1/Circ.22	RESOLUTION FOR THE 10TH MEETING OF THE SUB-COMMITTEE ON SHIP SAFETY	10/10/17	
MSC.1/Circ.23	RESOLUTION FOR THE 10TH MEETING OF THE SUB-COMMITTEE ON SHIP SAFETY	10/10/17	
MSC.1/Circ.24	RESOLUTION FOR THE 10TH MEETING OF THE SUB-COMMITTEE ON SHIP SAFETY	10/10/17	
MSC.1/Circ.25	RESOLUTION FOR THE 10TH MEETING OF THE SUB-COMMITTEE ON SHIP SAFETY	10/10/17	
MSC.1/Circ.26	RESOLUTION FOR THE 10TH MEETING OF THE SUB-COMMITTEE ON SHIP SAFETY	10/10/17	
MSC.1/Circ.27	RESOLUTION FOR THE 10TH MEETING OF THE SUB-COMMITTEE ON SHIP SAFETY	10/10/17	
MSC.1/Circ.28	RESOLUTION FOR THE 10TH MEETING OF THE SUB-COMMITTEE ON SHIP SAFETY	10/10/17	
MSC.1/Circ.29	RESOLUTION FOR THE 10TH MEETING OF THE SUB-COMMITTEE ON SHIP SAFETY	10/10/17	
MSC.1/Circ.30	RESOLUTION FOR THE 10TH MEETING OF THE SUB-COMMITTEE ON SHIP SAFETY	10/10/17	
MSC.1/Circ.31	RESOLUTION FOR THE 10TH MEETING OF THE SUB-COMMITTEE ON SHIP SAFETY	10/10/17	
MSC.1/Circ.32	RESOLUTION FOR THE 10TH MEETING OF THE SUB-COMMITTEE ON SHIP SAFETY	10/10/17	
MSC.1/Circ.33	RESOLUTION FOR THE 10TH MEETING OF THE SUB-COMMITTEE ON SHIP SAFETY	10/10/17	
MSC.1/Circ.34	RESOLUTION FOR THE 10TH MEETING OF THE SUB-COMMITTEE ON SHIP SAFETY	10/10/17	
MSC.1/Circ.35	RESOLUTION FOR THE 10TH MEETING OF THE SUB-COMMITTEE ON SHIP SAFETY	10/10/17	
MSC.1/Circ.36	RESOLUTION FOR THE 10TH MEETING OF THE SUB-COMMITTEE ON SHIP SAFETY	10/10/17	
MSC.1/Circ.37	RESOLUTION FOR THE 10TH MEETING OF THE SUB-COMMITTEE ON SHIP SAFETY	10/10/17	
MSC.1/Circ.38	RESOLUTION FOR THE 10TH MEETING OF THE SUB-COMMITTEE ON SHIP SAFETY	10/10/17	
MSC.1/Circ.39	RESOLUTION FOR THE 10TH MEETING OF THE SUB-COMMITTEE ON SHIP SAFETY	10/10/17	
MSC.1/Circ.40	RESOLUTION FOR THE 10TH MEETING OF THE SUB-COMMITTEE ON SHIP SAFETY	10/10/17	
MSC.1/Circ.41	RESOLUTION FOR THE 10TH MEETING OF THE SUB-COMMITTEE ON SHIP SAFETY	10/10/17	
MSC.1/Circ.42	RESOLUTION FOR THE 10TH MEETING OF THE SUB-COMMITTEE ON SHIP SAFETY	10/10/17	
MSC.1/Circ.43	RESOLUTION FOR THE 10TH MEETING OF THE SUB-COMMITTEE ON SHIP SAFETY	10/10/17	
MSC.1/Circ.44	RESOLUTION FOR THE 10TH MEETING OF THE SUB-COMMITTEE ON SHIP SAFETY	10/10/17	
MSC.1/Circ.45	RESOLUTION FOR THE 10TH MEETING OF THE SUB-COMMITTEE ON SHIP SAFETY	10/10/17	
MSC.1/Circ.46	RESOLUTION FOR THE 10TH MEETING OF THE SUB-COMMITTEE ON SHIP SAFETY	10/10/17	
MSC.1/Circ.47	RESOLUTION FOR THE 10TH MEETING OF THE SUB-COMMITTEE ON SHIP SAFETY	10/10/17	
MSC.1/Circ.48	RESOLUTION FOR THE 10TH MEETING OF THE SUB-COMMITTEE ON SHIP SAFETY	10/10/17	
MSC.1/Circ.49	RESOLUTION FOR THE 10TH MEETING OF THE SUB-COMMITTEE ON SHIP SAFETY	10/10/17	
MSC.1/Circ.50	RESOLUTION FOR THE 10TH MEETING OF THE SUB-COMMITTEE ON SHIP SAFETY	10/10/17	



IMO Document (Bulletin Board)



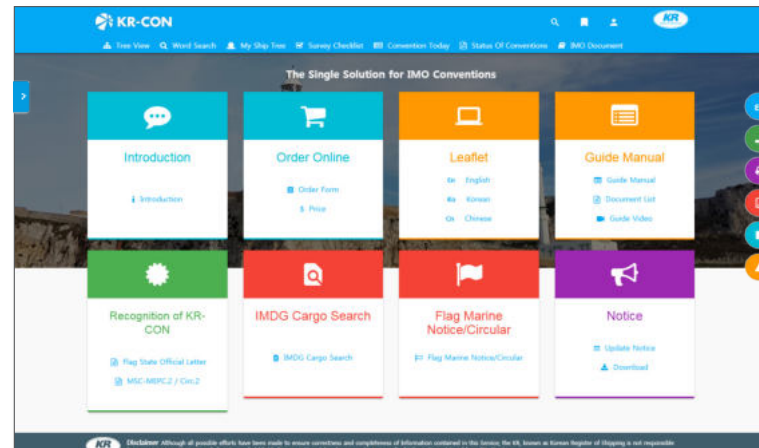
- Documents of IMO meetings
- IMO meetings : Committees, Sub-Committees
- Various Search functions
- Provided by IMO



KR-CON Cloud



- Servers located in Europe, North America, and Korea.
- Cloud network enables fast access to the most up-to-date IMO Convention database
- Easy access from any global location



Intuitive User Interface Design



- User Interface renewed to realize softer and user-friendly experience.
- Increased readability by changing locations of buttons from document and adding hotkeys

KR-CON 이용료

KR-CON USB



New purchase

\$590 per 1 copy

Volume discounts for new purchasers

3~10units	↓% 10% off
11~50units	↓% 20% off
51~100units	↓% 30% off
101units~	↓% 40% off

Maintenance (=repurchase)

\$290 per 1 copy(Previous purchasers only)

Volume discounts for maintenance

20~50unit	↓% 10% off
51~100unit	↓% 20% off
101unit~	↓% 30% off

KR-CON ID



\$240 per 1 ID(Valid for a year)

Web subscribers will also gain access to app version with the same ID

- KR-CON Web version (<http://krcon.krs.co.kr>)
- KR-CON App version (iOS & Android)

Disclaimer

Although all possible efforts have been made to ensure correctness and completeness of Information contained in this Service, KR, known as Korean Register is not responsible for any errors or omissions made herein, nor held liable for any actions taken by any party as a result of information retrieved from this Service.

Document List

※ marks new contents added to this version

SOLAS (International Convention for the Safety of Life at Sea, 1974, as modified by the protocol of 1988 relating thereto) (English, Korean)

- 1) Consolidated Edition
- 2) SOLAS 1974 Convention
- 3) SOLAS 1978 Protocol
- 4) 1981 Amend
- 5) 1983 Amend
- 6) 1988 Amend
- 7) 1989/1990 Amend
- 8) 1991/1992 Amend
- 9) 1994/1995 Amend
- 10) 1996/1998 Amend
- 11) 1999/2000 Amend
- 12) 2001-2003 Amend
- 13) 2004 Amend
- 14) 2005 Amend : Res.MSC.194(80)
- 15) 2006 Amend : Res.MSC.201(81), Res.MSC.202(81), Res.MSC.204(81), Res.MSC.216(82)
- 16) 2007 Amend : Res.MSC.239(83), Res.MSC.240(83)
- 17) 2008 Amend : Res.MSC.256(84), Res.MSC.257(84), Res.MSC.258(84), Res.MSC.269(85)

- 18) 2009 Amend : Res.MSC.282(86), Res.MSC.283(86)
- 19) 2010 Amend : Res.MSC.290(87), Res.MSC.291(87)
- 20) 2010 Amend : Res.MSC.308(88), Res.MSC.309(88)
- 21) 2011 Amend : Res.MSC.317(89)
- 22) 2012 Amend : Res.MSC.325(90)
- 23) 2012 Amend : Res.MSC.338(91), Res.MSC.344(91)
- 24) 2013 Amend : Res.MSC.350(92)
- 25) 2014 Amend : Res.MSC.365(93), Res.MSC.366(93)
- 26) 2014 Amend : Res.MSC.380(94)
- 27) 2014 Amend : Res.MSC.386(94)
- 28) 2015 Amend : Res.MSC.392(95), Res.MSC.394(95), Res.MSC.395(95)
- 29) 2016 Amend : Res.MSC.404(96), Res.MSC.409(97)
- 30) 2017 Amend : Res.MSC.421(98)

※ 31) 2018 Amend : Res.MSC.436(99)

※ 32) 2019 Amend : Res.MSC.456(101)

MARPOL (International Convention for the Prevention of Pollution from Ships, 1973, as modified by the Protocol of 1978 relating thereto) (English, Korean)

- 1) Consolidated Edition
- 2) 73/78 & 1984 Amend
- 3) 1985-1987 Amend
- 4) 1989-1991 Amend
- 5) 1992-1997 Amend
- 6) 1999 Amend
- 7) 2000/2001 Amend
- 8) 2003/2004 Amend
- 9) 2004 Amend (Oct.) : Res.MEPC.117(52) and Res.MEPC.118(52)
- 10) 2005 Amend : Res.MEPC.132(53)
- 11) 2006 Amend : Res.MEPC.141(54), Res.MEPC.143(54), Res.MEPC.154(55), Res.MEPC.156(55)
- 12) 2007 Amend : Res.MEPC.164(56)
- 13) 2008 Amend : Res.MEPC.176(58)
- 14) 2009 Amend : Res.MEPC.186(59), Res.MEPC.187(59), 2009 Amend : Res.MEPC.189(60), Res.MEPC.190(60)
- 15) 2010 Amend : Res.MEPC.194(61), Res.MEPC.193(61)
- 16) 2011 Amend : Res.MEPC.200(62), Res.MEPC.201(62), 2011 Amend : Res.MEPC.202(62), Res.MEPC.203(62)

- 17) 2012 Amend : Res.MEPC.216(63), Res.MEPC.217(63)
- 18) 2013 Amend : Res.EPC.235(65)
- 19) 2013 Amend : Res.MEPC.238(65)
- 20) 2014 Amend : Res.MEPC.251(66)
- 21) 2014 Amend : Res.MEPC.246(66), Res.MEPC.247(66), Res.MEPC.248(66)
- 22) 2014 Amend : Res.MEPC.256(67), Res.MEPC.257(67), Res.MEPC.258(67)
- 23) 2015 Amend : Res.MEPC.265(68), Res.MEPC.266(68)
- 24) 2016 Amend : Res.MEPC.270(69), Res.MEPC.271(69), Res.MEPC.274(69), Res.MEPC.275(69), Res.MEPC.276(70), Res.MEPC.277(70), Res.MEPC.270(70)
- 25) 2017 Amend : Res.MEPC.286(71)
- ※ 26) 2018 Amend : Res.MEPC.301(72), Res.MEPC.305(73)
- ※ 27) 2019 Amend : Res.MEPC.314(74), Res.MEPC.315(74), Res.MEPC.316(74)

ICLL (International Convention on Load Lines, 1966) (English, Korean)

- 1) Consolidated Edition

- 2) 1966 Convention
- 3) 1988 Protocol
- 4) 2003 Amend
- 5) 2006 Amend
- 6) 2008 Amend : Res.MSC.270(85)
- 7) 2012 Amend : Res.MSC.329(90)
- 8) 2013 Amend : Res.MSC.356(92)
- 9) 2014 Amend : Res.MSC.375(93)

STCW (International Convention on Standards of Training, Certification and Watchkeeping for Seafarers, 1978) (English, Korean)

- 1) Consolidated Edition
- 2) STCW Convention : International Convention on Standards of Training Certification and Watchkeeping for Seafarers, 1978 including the 2010 Manila Amendments
- 3) STCW Convention: Manila Amendments, 2011
- 4) STCW Code Part A : Mandatory standards regarding provisions of the annex to the STCW Convention
- 5) STCW Code Part B : Recommended guidance regarding provisions of the STCW Convention and

its annex MLC 2006 (Marine Labour Convention) (English, Korean)

MLC 2006 (Marine Labour Convention) (English, Korean)

- 1) Consolidated Edition
- 2) MLC 2006
- 3) 2014 Amend
- 4) 2016 Amend
- 5) 2018 Amend

COLREG 1972 (International Regulations for Preventing Collisions at Sea, 1972, as amended) (English, Korean)

- 1) Consolidated Edition
- 2) 1981 Amend : Res.A.464(12)
- 3) 1987 Amend : Res.A.626(15)
- 4) 1989 Amend : Res.A.678(16)
- 5) 1993 Amend : Res.A.736(18)
- 6) 2001 Amend : Res.A.910(22)
- 7) 2007 Amend : Res.A.1004(25)
- 8) 2013 Amend : Res.A.1085(28)



Document List

TONNAGE 1969 (International Convention on Tonnage Measurement of Ships, 1969) (English, Korean)

AFS 2001 (International Convention on the Control of Harmful Anti-Fouling Systems on Ships, 2001) (English, Korean)

BWM Convention, 2004 (International Convention for the Control and Management of Ships' Ballast Water and Sediments, 2004) (English, Korean)

Bunkers Convention, 2001 (International Convention on Civil Liability for Bunker Oil Pollution Damage, 2001) (English, Korean)

Ship Recycling Convention (English, Korean)

SOLAS 1960 (English)

IBC Code (International Code for the Construction and Equipment of Ships Carrying Dangerous Chemicals in Bulk) (English, Korean)

- 1) Consolidated Edition
- 2) 1983
- 3) 87/89/90 Amend
- 4) 92/96/97 Amend
- 5) 2000 Amend : Res.MSC.102(73), Res. MEPC.79(43), Res.MEPC.90(45)
- 6) 2004 Amend : Res.MSC.176(79), Res.MEPC.119(52)
- 7) 2006/2007 Amend : Res.MSC.219(82), Res.MEPC.166(56)
- 8) 2012 Amend : Res.MSC.340(91), Res.MEPC.225(64)
- 9) 2014 Amend : Res.MSC.369(93), Res.MEPC.250(66)
- 10) 2018 Amend : Res.MEPC.302(72)
- 11) 2019 Amend : Res.MEPC.318(74)

IGC Code (International Code for the Construction and Equipment of Ships Carrying Liquefied Gases in Bulk) (English)

- 1) Consolidated Edition
- 2) 83/90 Amend : Res.MSC.17(58)
- 3) 92 Amend : Res.MSC.30(61)
- 4) 94/96 Amend : Res.MSC.32(63), Res.MSC.59(67)

- 5) 2000 Amend : Res.MSC.103(73)
- 6) 2004 Amend : Res.MSC.177(79)
- 7) 2006 Amend : Res.MSC.220(82)
- 8) 2014 Amend : Res.MSC.370(93)
- 9) 2016 Amend : Res.MSC.411(97)
- 10) 2018 Amend : Res.MSC.441(99)

IMDG Code (International Maritime Dangerous Goods) (English)

- 1) Consolidated Edition
- 2) 35-10 Amend : Res.MSC.294(87)
- 3) 35-12 Amend : Res.MSC.328(90)
- 4) 35-14 Amend (Effective date:2014.05.22)
- 5) 35-14 Errata and Corrigenda
- 6) 38-16 Amend : Res.MSC.406(96)
- 7) 39-18 Amend : Res.MSC.442(99)

ISM Code (International Safety Management Code) (English, Korean)

- 1) ISM Consolidate Edition

- 2) ISM Code : Res.A.741(18)
- 3) 2000 Amend : Res.MSC.104(73)
- 4) 2004 Amend : Res.MSC.179(79)
- 5) 2005 Amend : Res.MSC.195(80)
- 6) 2008 Amend : Res.MSC.273(85)
- 7) 2013 Amend : Res.MSC.353(92)

ISPS Code (International Ship and Port Facility Security Code) (English, Korean)

- 1) ISPS Code Consolidated Edition
- 2) ISPS Code : SOLAS/Conf.5 Res.2
- 3) 2005 Amend : Res.MSC.196(80)

FSS Code (International Code for Fire Safety Systems) (English, Korean)

- 1) Consolidated Edition
- 2) 2006 Amend : Res.MSC.206(81), Res.MSC.217(82)
- 3) 2010 Amend : Res.MSC.292(87)
- 4) 2010 Amend : Res.MSC.311(88)

- 5) 2012 Amend : Res.MSC.327(90)
- 6) 2012 Amend : Res.MSC.339(91)
- 7) 2014 Amend : Res.MSC.367(93)
- 8) 2016 Amend : Res.MSC.403(96), Res.MSC.410(97)
- 9) 2019 Amend : Res.MSC.457(101)

FTP Code (International Code for Application of Fire Test Procedures) (English, Korean)

- 1) FTP Code 2004 Consolidated Edition
- 2) FTP Code 1998 : Res.MSC.61(67)
- 3) 2000 Amend : Res.MSC.101(73)
- 4) 2004 Amend : Res.MSC.173(79)
- 5) 2010 Amend : Res.MSC.307(88)
- 6) 2018 Amend : Res.MSC.437(99)

HSC Code (International Code of Safety for High-Speed Craft) (English, Korean)

HSC 1994
HSC 2000

- 1) HSC Code Consolidated Edition
- 2) HSC Code : Res.MSC.97(73)
- 3) 2004 Amend : Res.MSC.175(79)
- 4) 2006 Amend : Res.MSC.222(82)
- 5) 2008 Amend : Res.MSC.260(84), Res. MSC.271(85)
- 6) 2012 Amend : Res.MSC.326(90)
- 7) 2013 Amend : Res.MSC.352(92) DSC (Code of Safety for Dynamically Supported Craft)
- 8) 2017 Amend : Res.MSC.423(98), Res.MSC.424(98)
- 9) 2018 Amend : Res.MSC.439(99)

LSA Code (International Life-Saving Appliance Code) (English, Korean)

- 1) LSA Code Consolidated Edition
- 2) 2006 Amend : Res.MSC.207(81), Res.MSC.218(82)
- 3) 2008 Amend : Res.MSC.272(85)
- 4) 2010 Amend : Res.MSC.293(87)
- 5) 2011 Amend : Res.MSC.320(89)
- 6) 2014 Amend : Res.MSC.368(93)



Document List

- 7) 2017 Amend : Res.MSC.425(98)
- 8) 2019 Amend : Res.MSC.459(101)

NOx Code 2008 (Technical Code on Control of Emission of Nitrogen Oxides from Marine Diesel Engines) (English, Korean)

NOx Technical Code 2008

- 1) NOx Technical Code Consolidated Edition
- 2) 2000 Amend : MEPC 44
- 3) 2005 Amend : Res.MEPC.132(53)
- 4) 2008 Amend : Res.MEPC.177(58)
- 5) 2012 Amend : Res.MEPC.217(63)
- 6) 2014 Amend : Res.MEPC.251(66)
- 7) 2016 Amend : Res.MEPC.272(69)
- 8) 2019 Amend : Res.MEPC.317(74)

NOx Code (Technical Code on Control of Emission of Nitrogen Oxides from Marine Diesel Engines) (English)

- 1) NOx Code
- 2) 2000 Amend : MEPC 44
- 3) 2005 Amend : Res.MEPC.132(53)
- 4) 2008 Amend : Res.MEPC.177(58)

ESP Code (International Code on the Enhanced Programme of Inspections during Surveys of Bulk carriers and Oil tankers) (English)

- 1) Consolidated Edition
- 2) ESP Code 2011
- 3) 2014 Amend : Res.MSC.371(93), Res.MSC.381(94)
- 4) 2016 Amend : Res.MSC.405(96), Res.MSC.412(97)
- 5) 2019 Complete Revision : Res.MSC.461(101)

MODU Code (Code for the Construction and Equipment of Mobile Offshore Drilling Units) (English)

MODU 1979

- 1) MODU 1989 : Res.A.649(16)
- 2) 1991 Amend : MSC/Circ.561
- 3) 1994 Amend : Res.MSC.38(63)

- 4) 2004 Amend : Res.MSC.187(79)
- 5) 2013 Amend : Res.MSC.357(92)
- 6) 2014 Amend : Res.MSC.382(94)

MODU 1989

- 1) MODU Code, 1979 : Res.A.414(11)
- 2) 1991 Amend : MSC/Circ.561
- 3) 1994 Amend : Res.MSC.38(63)
- 4) 2004 Amend : Res.MSC.187(79)
- 5) 2013 Amend : Res.MSC.358(92)
- 6) 2014 Amend : Res.MSC.383(97)

MODU 2009

- 1) MODU Code Consolidated Edition
- 2) MODU 2009 : Res.A.1023(26)
- 3) 2013 Amend : Res.MSC.358(92)
- 4) 2014 Amend : Res.MSC.384(94), Res.MSC.387(94)
- 5) 2016 Amend : Res.MSC.407(96)
- 6) 2017 Amend : Res.MSC.435(98)

IMSBC Code (International Maritime Solid Bulk Cargoes Code) (English, Korean)

- 1) Consolidated Edition
- 2) IMSBC Code : Res.MSC.268(85)
- 3) 2011 Amend : Res.MSC.318(89)
- 4) 2013 Amend : Res.MSC.354(92)
- 5) 2015 Amend : Res.MSC.393(95)
- 6) 2017 Amend : Res.MSC.426(98)
- 7) 2019 Complete revision : Res.MSC.462(101)

RO Code (Code for Recognized Organizations) (English, Korean)

III Code (IMO Instruments Implementation Code) (English, Korean)

more CONVENTIONS (English)

- 1) Athens-PAL (Athens Convention relating to the Carriage of Passengers and their Luggage by Sea, 1974)
- 2) CLC (The international convention on civil liability for oil pollution damage 1969)
- 3) CSC 1972 (International Convention for Safe Containers, 1972)

- 4) CIMO (1948 Convention on the International Maritime Organization)
- 5) FAL (Facilitation Convention)
- 6) FUND (International Convention on the Establishment of an International Fund for Compensation for Oil Pollution Damage, 1971)
- 7) HNS 1996 (International Convention on Liability and Compensation for Damage in Connection with the Carriage of Hazardous and Noxious Substances by Sea, 1996)
- 8) HNS 2010 (International Convention on Liability and Compensation for Damage in Connection with the Carriage of Hazardous and Noxious Substances by Sea, 2010)
- 9) ILO Convention: International Labour Organization Convention
- 10) Inmarsat (Convention on the International Mobile Satellite Organization, 1976)
- 11) Intervention (International Convention relating to Intervention on the High Seas in Cases of Oil Pollution Casualties, 1969)
- 12) London Convention (Convention on the

- Prevention of Marine Pollution by Dumping of Wastes and other Matter, 1972, as amended)
- 13) LLMC (Convention on Limitation of Liability for Maritime Claims, 1976)
- 14) NUCLEAR 1971 (Convention relating to Civil Liability in the Field of Maritime Carriage of Nuclear Material, 1971)
- 15) OPRC 1990 (International Convention on Oil Pollution Preparedness, Response and Cooperation, 1990)
- 16) OPRC-HNS Protocol 2000 (Protocol on Preparedness, Response and Co-operation to pollution Incidents by Hazardous and Noxious Substances, 2000)
- 17) Removal of Wreck
- 18) SALVAGE 1989 (International Convention on Salvage, 1989)
- 19) SAR 1979 (International Convention on Maritime Search and Rescue, 1979)
- 20) SFV 1993 (Torremolinos International Convention for the Safety of Fishing Vessels, 1977)
- 21) SOLAS 1960
- 22) Space Requirements For STPS, 1973 Protocol (Protocol and Rules on Space Requirements for



Document List

- Special Trade Passenger Ships, 1973)
- 23) STCW-Fishing Vessel Personnel, 1995
- 24) STPS 1971 (Special Trade Passenger Agreements and Rules, 1971)
- 25) SUA : Convention for the Suppression of Unlawful Acts Against the Safety of Maritime Navigation (Rome, 10 March 1988)
- 26) UNCLOS : United Nations Convention on the Law of the Sea

more CODEs (English)

- 1) Code on Alarms and Indicators (English)
- 2) BC (Code of Safe Practice for Solid Bulk Cargoes) (English, Korean)
- 3) BCH (Code for the Construction and Equipment of Ships Carrying Dangerous Chemicals in Bulk) (English)
- 4) BLU (Code of Practice for the Safe Loading and Unloading of Bulk Carriers) (English)
- 5) Casualty Investigation Code (Code of the International Standards and Recommended

- Practices for a Safety Investigation into a Marine Casualty or Marine Incident) (English)
- 6) CSS (Code of Safe Practice for Cargo Stowage and Securing) (English)
- 7) CTU Code (IMO/ILO/UNECE Code of Practice for Packing of Cargo Transport Units)
- 8) GC (Code for the Construction and Equipment of Ships Carrying Liquefied Gases in Bulk) (English)
- 9) GRAIN (International Code for the Safe Carriage of Grain in Bulk) (English)
- 10) INF (International Code for the Safe Carriage of Packaged Irradiated Nuclear Fuel, Plutonium and High-level Radioactive Wastes on Board Ships) (English, Korean)
- 11) OSV (Code of Practice for the Carriage of Cargoes and Persons by Offshore Supply Vessels) (English)
- 12) Pesticides (Recommendations of the Safe use of Pesticides in Ships) (English)
- 13) SPS (Code of Safety for Special Purpose Ships) (English)
- 14) Code of Safety for Fishermen and Fishing Vessels

- (English)
- 15) TIMBER 1991 (Code of Safe Practice for Ships - Carrying Timber Deck Cargoes, 1991) (English)
- 16) TIMBER 2011 (Code of Safe Practice for Ships - Carrying Timber Deck Cargoes, 2011) (English)

RESOLUTIONs : Assembly, MSC, MEPC, FAL, LEG, SOLAS Conference (English)

- ※ 1) Assembly Resolutions (up to 101st session)
- ※ 2) MSC Resolutions (up to 100th session)
- ※ 3) MEPC Resolutions (up to 74th session)
- 4) FAL Resolutions
- 5) LEG Resolutions
- 6) SOLAS Conference Resolutions

CIRCULARs : MSC, MEPC, MSC-MEPC, LL3 (English)

- 1) MSC Circulars
- 2) MEPC Circulars
- 3) MSC-MEPC Circulars

- 4) LL.3 Circulars
- 5) STCVV.6&7&F.1 Circulars
- 6) BC.1 Circulars
- 7) BWM.2 Circulars
- 8) FAL.5 Circulars
- 9) FP.1 Circulars
- 10) LLMC.3 Circulars

UNCLOS (United Nations Convention on the Law of the Sea) (English)

※ IACS (English)

- UI : Unified Interpretation
- 1) CC : IMO Chemical Code
- 2) FTP : Fire Test Procedure
- 3) GC : Liquefied Gases in Bulk
- 4) HSC : High Speed Craft Code
- 5) LL : Load Line convention
- 6) MPC : MARPOL Convention
- 7) SC : SOLAS Convention

- 8) SM : ISM Code
- 9) TM : Tonnage Measurement
- 10) COLREG : Interpretations of the COLREG
- 11) PASSUB : Passenger Submersible Craft

KR-CON USB

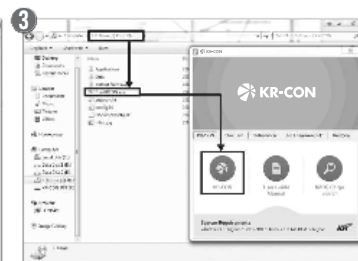
Ready to start KR-CON	30
Main page	31
Tree View	32
Word Search	38
My Ship Tree	39
Survey Checklist	41
Convention Today	45
Status of Convention	46
IMDG Cargo Search Program	47
Flag Admin. Marine Notice Browser	49

KR-CON Web

Main Page	52
Tree View	53
Word Search	60
My Ship Tree	61
Survey Checklist	63
Convention Today	67
Status of Convention	68
IMDG Cargo Search Program	69
Flag Admin. Marine Notice Browser	70

KR-CON APP

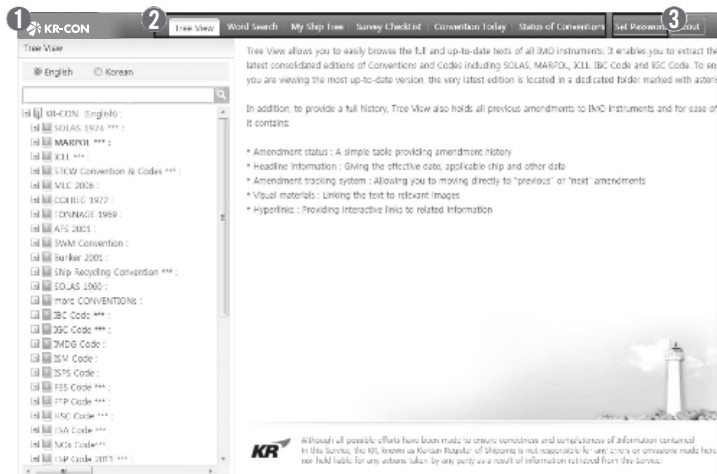
Download KR-CON App	72
Login page	73
Main Page	74
Tree View	75
Word Search	76
My Ship Tree	77
Survey Checklist	78



Ready to start KR-CON

1. KR-CON USB connects with your PC.
2. Click "CD Drive KR-CON version".
3. Click "Run KR-CON", and then click "KR-CON".





Main page

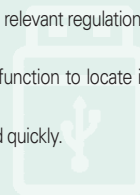
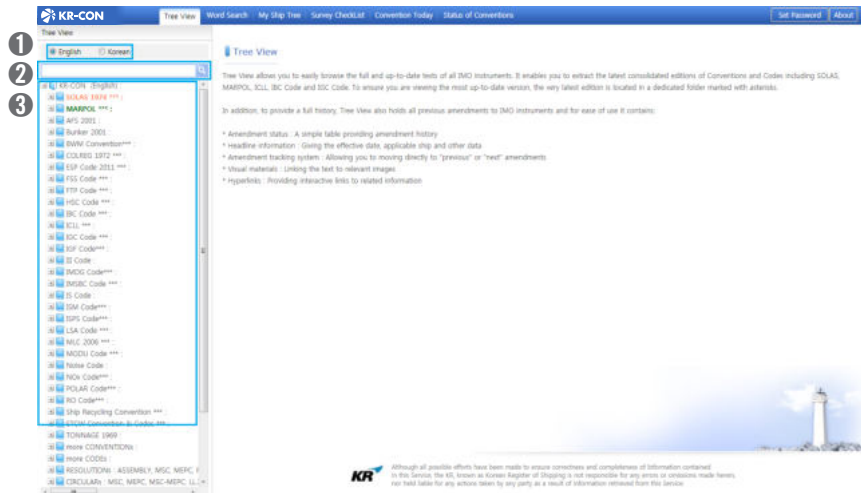
1. Click this button to return to the main page.
2. Top menu bar.
3. Password set button.

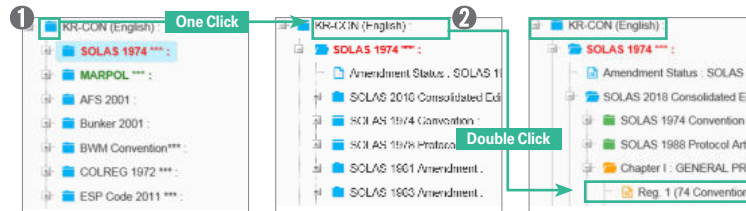
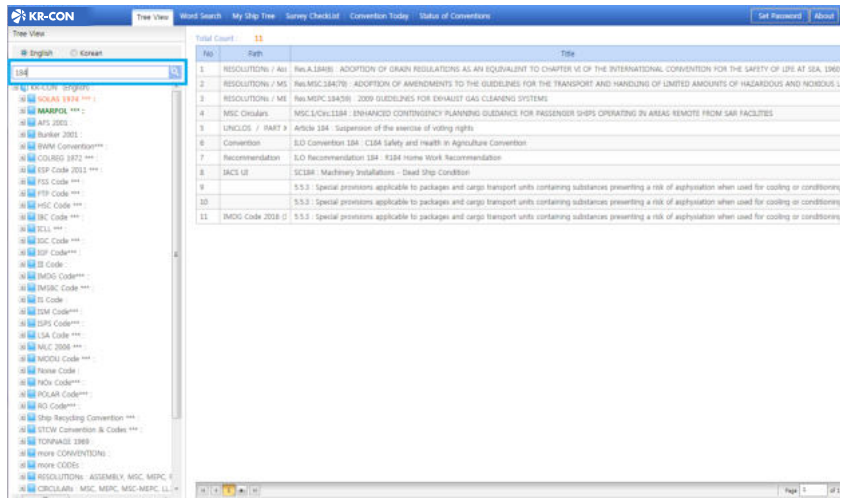



Tree View (1)

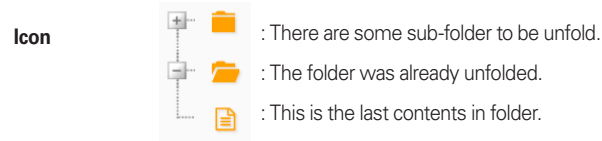
All IMO documents are displayed in a tree structure so you can easily locate the relevant regulation.

1. Choose from two language options.
2. If you know the exact number of a Resolution or Circular, use this search function to locate it quickly.
3. KR-CON uses a directory tree structure to help you find regulations easily and quickly.





The user can browse tree view structure by one clicking the  Button or double clicking the name of each folder



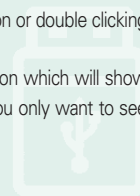
Tree View (2)

Simple search function

- Use this simple search function to locate IMO documents easily.
- If you input document number of Resolution or Circular and click "search", Relevant results are displayed on the right of the screen.

Tree View (3)

1. You can browse through the tree view structure by clicking the “+” button or double clicking the name of each folder.
2. **Consolidated edition** : This function displays the IMO consolidated edition which will show the latest regulations or IMO conventions available. Use this function if you only want to see the latest documents.



Amendment status
This table provides brief information on when the relevant convention or code was amended.

Hyper Link
Click here to move directly to the relevant document.

Title	Adopted		Effective date			
	by	date		I	II-1	
1960 SOLAS ¹⁾	Conference	17.Jun.1960	26.May.1965			
1974 SOLAS	Conference	01.Nov.1974	25.May.1980			
1978 Protocol	Conference	17.Feb.1978	01.May.1981	2, 6, 7, 8, 10, 11, 14, 19	1, 2, 29(d)	1, 3, 5
1981 Amendments	Res.MSC.1(45)	20.Nov.1981	01.Sep.1984		1 ~ 54 (Completely revised)	1 ~ 6; (Comp revise)
1981 Amendments to 1978 Protocol	Res.MSC.2(45)	20.Nov.1981	01.Sep.1984		29(d)(i)(1), 29(d)(i)(3)	
1983 Amendments	Res.MSC.6(48)	17.Jun.1983	01.Jul.1986		1, 3, 5, 6, 41, 42, 43, 49	1, 3 ~ 15, 20, 32, 36, 49, 51, 59, 61

Tree View (4)

Amendment status

This function informs you when the relevant convention or code was amended and what those amendments were.



1 Language selection: English or Korean.

2 Print icon.

3 Previous Regulation / Next Regulation dropdowns.

4 Head Information section: Title (SOLAS 2015 Amend / Chapter II-1 / Reg. 2), Effective Date (1/1/2017).

5 Hyper Link: Click the hyperlinks to move directly to the relevant document.

4 Forward terminal is the forward limit of the subdivision length.

5 Length (L) is the length as defined in the International Convention on Load Lines in force.

6 Freeboard deck is the deck as defined in the International Convention on Load Lines in force.

7 Forward perpendicular is the forward perpendicular as defined in the International Convention on Load Lines in force.

8 Breadth (B) is the greatest moulded breadth of the ship at or below the deepest subdivision draught.

9 Draught (d) is the vertical distance from the keel line at mid-length to the waterline in question.

10 Deepest subdivision draught (ds) is the waterline which corresponds to the summer load line draught of the ship.

11 Light service draught (dl) is the service draught corresponding to the lightest anticipated loading and associated tankage, including, however, such ballast as may be necessary for stability and/or immersion. Passenger ships should include the full complement of passengers and crew on board.

12 Partial subdivision draught (dp) is the light service draught plus 60% of the difference between the light service draught and the deepest subdivision draught.

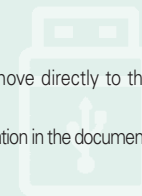
13 Trim is the difference between the draught at the forward and aft ends of the ship, measured at the forward and aft terminals respectively, disregarding any rake of keel.

14 Permeability (p) of a space is the proportion of the space occupied by water.

15 Machinery spaces are spaces between the watertight boundaries of a space containing the main and auxiliary propulsion machinery, including the spaces for the main and auxiliary propulsion machinery.

Tree View (5)

1. Choose from two language options.
2. Print all your documents easily.
3. Amendment tracking function : Use Amendment tracking function to move directly to the previous or next Amendment.
4. Head information : This displays the essential information relating to each regulation in the document.
5. Use hyperlinks to move directly to the relevant document.



KR-CON Tree View Word Search My Ship Tree Survey Checklist Convention Today Status of Conventions Set Password

Language: English Korean

Tree View

English Korean

KR-CON (English)

SOLAS 1974 ***

Amendment Status : SOLAS 1974

SOLAS 2017 Consolidated Edition

SOLAS 1974 Convention Articles

SOLAS 1988 Protocol Articles

Chapter 1 : GENERAL PROVISIONS

Chapter 2-1 : CONSTRUCTION-STRUCTURE

Reg. 1 (06 Amendment) : Application

Reg. 2 (15 Amendment) : Definition

Reg. 3 (06 Amendment) : Definition

Reg. 3-1 (05 Amendment) : Structure

Reg. 3-2 (06 Amendment) : Protection

Reg. 3-3 (05 Amendment) : Safe access

Reg. 3-4 : Emergency towing arrangements

Reg. 3-5 (09 Amendment) : New installations

Reg. 3-6 (05 Amendment) : Access

Reg. 3-7 (05 Amendment) : Construction

Reg. 3-8 (05 Amendment) : Towing

Reg. 3-9 (08 Amendment) : Means

Reg. 3-10 (10 Amendment) : Goal

Reg. 3-11 (10 Amendment) : Corrosion

Reg. 3-12 (16 Amendment) : Protection

Reg. 4 (06 Amendment) : General

Reg. 5 (05 Amendment) : Intact stability

Reg. 5-1 (06 Amendment) : Stability

Reg. 6 (06 Amendment) : Required

Reg. 7 (06 Amendment) : Attained

Reg. 7-1 (06 Amendment) : Calculation

Title SOLAS 2005 Amend / Chapter II-1 / Reg. 3-8

Effective Date 1/1/2007

For Ships Constructed On or after 1/1/2007

Reference Materials double hull, single hull

Head Info.

Reference materials

Regulation 3-8

Towing and mooring equipment

Refer to IACS UI SC226 (IACS Unified Interpretations (UI) Tanker to Double Hull Tanker or Bulk Carrier/ Ore Carrier)

Refer to IACS UI SC212 Shipboard fittings and support vessels

1 This regulation applies to ships constructed on or after 1 January in accordance with regulation 3-4.

2 Ships shall be provided with arrangements, equipment and fitting and mooring operations associated with the normal operation of the

3 Arrangements, equipment and fittings provided in accordance with Administration or an organization recognized by the Administration

* Refer to MSC/Circ.1175 on Guidance on shipboard towing and mooring equipment.

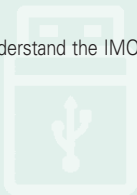
4 Each fitting or item of equipment provided under this regulation shall be clearly marked with any restrictions associated with its operation, taking into account the strength of its attachment to the ship's structure.

(Refer to This regulation was adopted by Res.MSC.194(80))

Tree View (6)

Reference material

We have linked the text with relevant visual material to help you understand the IMO instruments more easily.



37

38

KR-CON Tree View Word Search My Ship Tree Survey Checklist Convention Today Status of Conventions Set Password

Word Search

lifeboat

SEARCH

English Korean

Category ALL

SubCategory ALL

Total : 618

[RESOLUTIONS / MSC Resolutions / 96th Session] Res.MSC.482(96) : REQUIREMENTS FOR MAINTENANCE, THOROUGH EXAMINATION, OPERATIONAL TESTING, OVERHAUL AND REPAIR OF LIFEBOATS AND RESCUE BOATS, LAUNCHING APPLIANCES AND RELEASE GEAR

TESTING, OVERHAUL AND REPAIR OF **lifeboat** AND RESCUE BOATS, LAUNCHING APPLIANCES ... Measures to prevent accidents with **lifeboats** (MSC.1/Circ.1206/Rev.1) and the interim recommendation ... authorization of service providers for **lifeboats**, launching appliances and on-board release ... testing, overhaul and repair of **lifeboats** (including free-fall **lifeboats**) and rescue ...

[RESOLUTIONS / MSC Resolutions / 96th Session] Res.MSC.484(96) : AMENDMENTS TO THE INTERNATIONAL CONVENTION FOR THE SAFETY OF LIFE AT SEA, 1974, AS AMENDED

Testing, overhaul and repair of **lifeboats** and rescue boats, launching appliances ... testing, overhaul and repair of **lifeboats**; rescue boats and fast rescue ... complement of persons and equipment 11.2 **lifeboat** and rescue boat release gear ... boat release gear and free-fall **lifeboat** release systems, shall be ... 1 subject ...

[RESOLUTIONS / MSC Resolutions / 96th Session] Res.MSC.486(96) : AMENDMENTS TO CHAPTER 2 OF THE CODE OF SAFETY FOR SPECIAL PURPOSE SHIPS, 2008 (2008 SPS CODE)

number of persons for whom **lifeboats** are provided 2 = number of ...

[MSC Circulars / MSC.1/Circ.1486] MSC.1/Circ.1486/Corr.1 : GUIDELINES ON ALTERNATIVE METHODS FOR LIFEBOAT DRILLS ON MODUL

2016 GUIDELINES ON ALTERNATIVE METHODS FOR **lifeboat** DRILLS ON MODUL Containerships The existing annex ...

[MSC Circulars] MSC.1/Circ.1529 : UNIFIED INTERPRETATIONS OF PARAGRAPH 4.4.7.6 OF THE LSA CODE, AS AMENDED BY RESOLUTION MSC.320(89)

providing more specific guidance on **lifeboat** release and retrieval systems, approved ... OF THE REQUIREMENTS RELATING TO **lifeboat** RELEASE AND RETRIEVAL SYSTEMS Paragraphs 4.4.7.6.6 ... duration for components outside the **lifeboat**, and 160 hours for those ... hours for those inside the **lifeboat**. The salt spray tests may ...

[MSC Circulars] MSC.1/Circ.1532 : REVISED GUIDELINES ON OPERATIONAL INFORMATION FOR MASTERS OF PASSENGER SHIPS FOR SAFE RETURN TO PORT

applied moments such as wind, **lifeboat** launching, cargo shifts and passenger ...

[MSC-MEPC Circulars] MSC-MEPC.5/Circ.12 : AMENDMENTS TO THE SURVEY GUIDELINES UNDER THE HARMONIZED SYSTEM OF SURVEY AND CERTIFICATION, 2015, FOR SHIPS OPERATING IN POLAR WATERS

ice are provided for each **lifeboat** (Polar Code: part I-A/Cd. 8.3.3.2); (W)3.1.1.34 (Add ... PE, EI) confirming that the **lifeboats** are of the partially or ... that, each rescue boat and **lifeboat** is capable to be provided ... search lights provided for each **lifeboat** suitable for continuous use to ...

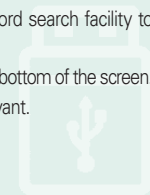
[MARPOL 2016 Amend (69th) / Annex VI] Reg. 13 : Nitrogen Oxides (NOx)

Page 1 of 12

Word Search

If you don't know exactly which document you need, use the powerful word search facility to help you locate it.

1. Input your key words and click "search". Relevant results are displayed on the bottom of the screen.
2. A filter function allows you to ensure the search results are absolutely relevant.



Essential input item

Search Results

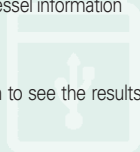
My Ship Tree (1)

IMO instruments are applied to ships according to their type, construction date and other parameters.

1. My Ship Tree will deliver the specific regulations which are relevant to the vessel information you have input (such as ship type and/or construction date).

* asterisk : This is for essential item which you must input.

2. Click the “search” button once you have entered the essential information to see the results displayed at the bottom left corner of the screen.



39 40

Retroactive

Regulation 15

Forms of certificates and records of equipment*

* Refer to Guidance on the timing of replacement of existing certificates by the certificates issued after the entry into force of amendments to certificates in IMO instruments (MSC-MEPC.5/Circ.6)

The certificates and records of equipment shall be drawn up in the form corresponding to the models given in the appendix to the present Convention. If the language used is neither English nor French, the text shall include a translation into one of these languages.

* Refer to resolution A.561(14) on translation of the text of certificates.

My Ship Tree (2)

3. Retrospective requirements

Requirements which are to be applied retrospectively to existing ships are categorized in the lowest level folder in each chapter of the convention as “Retrospective Requirements”.



1

Information Input Space

Word Search My Ship Tree Survey Checklist Convention Today Status of Conventions

Survey Checklist

Ship's Particular

Name Of Ship KR-CON

Ship Type Oil Tankers

Construction Date(K/L) 2018-03-01

Date Of Enquiry 2018-03-14

Gross Tonnage 12345 GT

Deadweight Tonnage 12123 dwt

Freeboard Length 12 m

Overall Length 321 m

UMA ☒ Yes ☐ No

Kind Of Survey

☐ Initial Survey

☒ Annual Survey(AS/PS)

☐ Intermediate Survey(IS/PS)

☐ Renewal Survey(RS)

Location of Equipment/Arrangement

☒ Navigation Bridge ☒ Engine Room

☒ Accommodation ☒ Cargo Area

Kind Of Certificate

☒ SC ☒ IOPP ☒ IAPP ☐ ILL

☐ SE ☐ ISPP ☐ IBC ☐ PS

☐ SR ☐ IGPP ☐ IGC ☐ IBBM

Latest Amendment

☒ Latest Amendment

Search

ALL SC IOPP IAPP

Search Result

Checklist for SC Annual Survey (AS/PS)

Ship's particular

Name of Ship	KR-CON		
Ship Type	Oil Tankers		
Construction Date (K/L)	2018-03-01	Current Date	2018-03-14
Gross tonnage	12345 GT	Deadweight tonnage	12123 dwt
Freeboard length	12 m	Overall length	321 m
UMA	<input checked="" type="radio"/> Yes <input type="radio"/> No		

Navigation Bridge

1. Hull and machinery

checking that, as appropriate, the hull and machinery has been presented for survey in accordance with the continuous survey scheme approved by the Administration or a classification society (SOLAS 2005 Amend / Chapter II-1 / Reg. 3-1)

2. Manoeuvring booklet

confirming that the manoeuvring booklet is on board and that the manoeuvring information is displayed on the navigating bridge (SOLAS 1981 Amend / Chapter II-1 / Reg. 28)

3. Protection against noise

checking, where applicable, that the noise survey report as required by the Code on noise levels on board ships is available on board. This regulation shall apply to ships of 1,600 gross tonnage and above... 1. for which the building contract is placed on or after 1 July 2014; or 2. in the absence of a building contract, the keels of which are laid or which are at a similar stage of construction on or after 1 January 2015; or 3. the delivery of which is on or after 1 July 2018. On ships delivered before 1 July 2018 and... 1. contracted for construction before 1 July 2014 and the keels of which are laid or which are...

41

42

Survey Checklist

1 Name of ship

Class Number(S)

Ship Type

Construction Date(K/L)

Date of Enquiry

Gross Tonnage

Deadweight Tonnage

Freeboard Length

Overall Length

UMA ☒ Yes ☐ No

Kind of Survey

☒ Initial Survey

☐ Annual Survey (AS/PS)

☐ Intermediate Survey (IS/PS)

☐ Renewal Survey (RS)

Location of Equipment/ Arrangement

☒ Navigation bridge ☒ Engine room

☒ Accommodation ☒ Cargo area

Kind of Certificate

☐ SC ☐ IOPP ☐ IAPP ☐ ILL

☐ SE ☐ ISPP ☐ IBC ☐ PS

☐ SR ☐ IGPP ☐ IGC ☐ IBBM

☐ POLAR

Latest Amendment

☐ Latest Amendment

IL SEARCH IS TEST IN ADD

It includes a series of mandatory boxes which are composed of the ship name, Class number, ship type and date on which the keel was laid.

Enter optional, additional information here to create a more detailed checklist.

By selecting a Criteria Selection, the user can find a convention reference retrieved by the selected criteria based on the;

- Kind of survey
- Location of Equipment/Arrangement
- Kind of Certificate

This button clears existing search criteria to enable you to make a new search.

Survey Checklist (1)

Checklist function

The "Survey Checklist" delivers an abstract of the requirements applicable to specific ships based on Res.A.1053(27), as amended by Res.A.1076(28)/A.1104(29). Once a ship's particulars are input, survey checklists are created for SC, SE, SR, PS, IOPP, ILL, IBC, IGC, IGPP, ISPP and IAPP for initial and periodical surveys.

* asterisk : This is for essential items which you must input to create a checklist.

Survey Checklist (2)

This page provide a series of boxes for inputting the ship information data and check boxes for selecting the criteria under which the inspector would like to check.

Name of ship KR-CON

Class Number(KR)

*** Ship Type** All Ships

*** Construction Date(K/L)** 2/1/2018

*** Date of Enquiry** 2/6/2018

Gross Tonnage GT

Deadweight Tonnage DWT

Freeboard Length m

Overall Length m

UMA ☒ Yes ☐ No

Name of Ship & Ship Type

*** Construction Date(K/L)** 2/1/2018

*** Date of Enquiry** 2/6/2018

Gross Tonnage GT

Deadweight Tonnage DWT

Freeboard Length m

Overall Length m

UMA ☒ Yes ☐ No

Kind Of Certificate

☐ Initial Survey

☒ Annual Survey(AS/PS)

☐ Intermediate Survey(IS/PS)

☐ Renewal Survey(RS)

Location of Equipment/Arrangement

☒ Navigation Bridge ☒ Engine Room

☒ Accommodation ☒ Cargo Area

Kind Of Certificate

☒ SC ☒ IOPP ☒ IAPP ☐ ILL

☐ SE ☐ ISPP ☐ IBC ☐ PS

☐ SR ☐ IGPP ☐ IGC ☐ IBWM

Latest Amendment

☒ Latest Amendment

KR-CON Tree View Word Search My Ship Tree Survey Checklist Convention Today Status of Conventions Set Password About

Survey Checklist

Ship's Particular

*** Name Of Ship** KR-CON

*** Ship Type** Oil Tankers

*** Construction Date(K/L)** 2018-03-01

Date Of Enquiry 2018-03-14

Gross Tonnage 12345 GT

Deadweight Tonnage 12123 dwt

Freeboard Length 12 m

Overall Length 321 m

UMA ☒ Yes ☐ No

Kind Of Survey

☐ Initial Survey

☒ Annual Survey(AS/PS)

☐ Intermediate Survey(IS/PS)

☐ Renewal Survey(RS)

Location of Equipment/Arrangement

☒ Navigation Bridge ☒ Engine Room

☒ Accommodation ☒ Cargo Area

Kind Of Certificate

☒ SC ☒ IOPP ☒ IAPP ☐ ILL

☐ SE ☐ ISPP ☐ IBC ☐ PS

☐ SR ☐ IGPP ☐ IGC ☐ IBWM

Latest Amendment

☒ Latest Amendment

Print your checklist into pdf file by clicking the 'PDF' button'

Survey Checklist for SC Annual Survey (AS/PS)

Ship's particular

Name of Ship	KR-CON	Current Date	2018-03-14
Ship Type	Oil Tankers	Deadweight tonnage	12123 dwt
Construction Date (K/L)	2018-03-01	Gross tonnage	12345 GT
		Overall length	321 m
Freeboard length	12 m		
UMA	<input checked="" type="radio"/> Yes <input type="radio"/> No		

Navigation Bridge Location of arrangement as selected by you

Ship's particulars are shown here.

1. Hull and machinery

checking that, as appropriate, the hull and machinery has been presented for survey in accordance with the continuous survey scheme approved by the Administration or a classification society (SOLAS 2005 Amend / Chapter II-1 / Reg. 9-1)

2. Manoeuvring booklet

confirming that the manoeuvring booklet is on board and that the manoeuvring information is displayed on the navigating bridge (SOLAS 1981 Amend / Chapter II-1 / Reg. 28)

3. Protection against noise

checking, where applicable, that the noise survey report as required by the Code on noise levels on board ships is available on board This regulation shall apply to ships of 1,600 gross tonnage and above... 1 for which the building contract is placed on or after 1 July 2014; or 2 in the absence of a building contract, the keels of which are laid or which are at a similar stage of construction on or after 1 January 2015; or 3 the delivery of which is on or after 1 July 2018. On ships delivered before 1 July 2018 and... 1 contracted for construction before 1 July 2014 and the keels of which are laid or which are at a similar stage of construction on or after 1 January 2009 but before 1 January 2015; or 2 in the absence of a building contract, the

Survey Checklist (3)

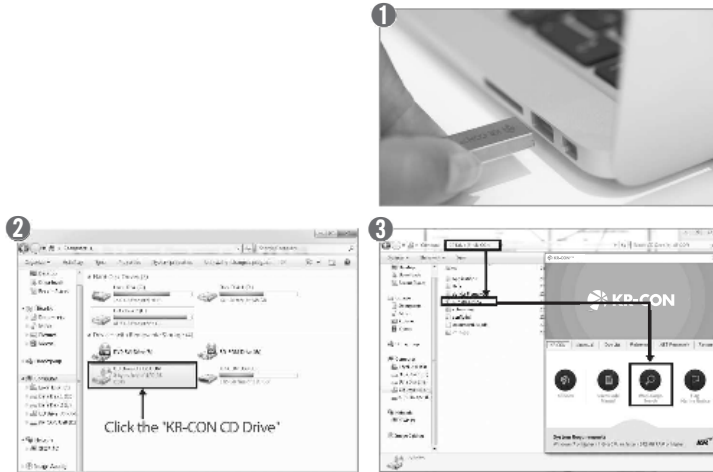
Date input

Dates can be selected by clicking the calendar icon or by entering a date directly into the box.
The asterisked(*) boxes – access a checklist by inputting essential information.



Survey Checklist (4)



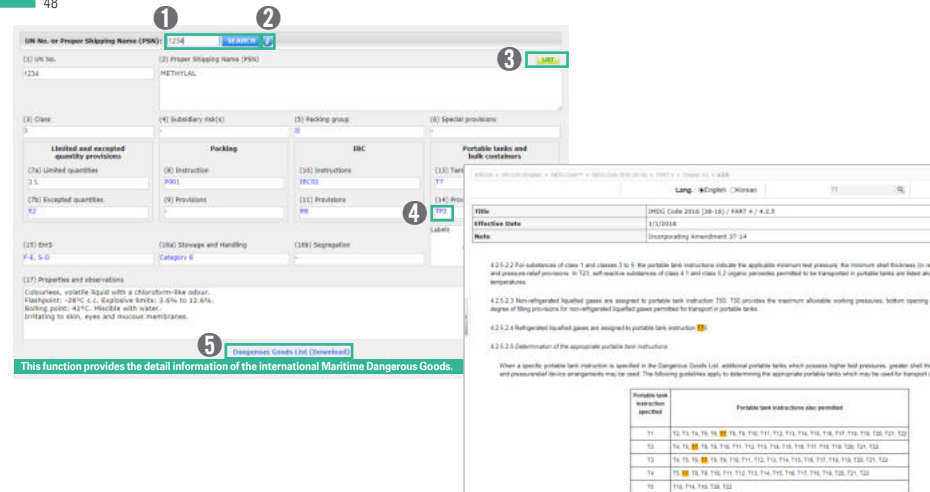


IMDG Cargo Search Program (1)

1. KR-CON USB connects with your PC.
2. Click "CD Drive KR-CON version".
3. Click "Run KR-CON" and Click "IMDG Cargo Search Program".

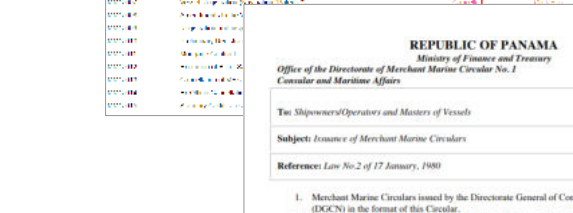
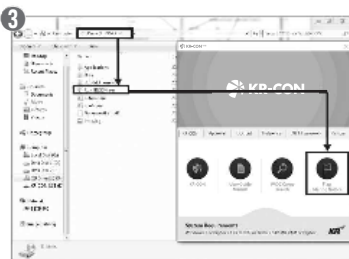


IMDG Cargo Search Program (2)



1. Input "UN No" or "Proper Shipping Name(PSN)" and click "search". Relevant results are displayed on your screen.
2. Structure of the Dangerous Goods List.
3. Move to Search Result List.
4. Click the hyperlinks to move directly to the relevant document.
5. Download a Dangerous Goods List.





Flag Admin. Marine Notice Browser (1)

1. KR-CON USB connects with your PC.
2. Click "CD Drive KR-CON version".
3. Click "Run KR-CON" and Click Flag Administration Marine Notice Browser

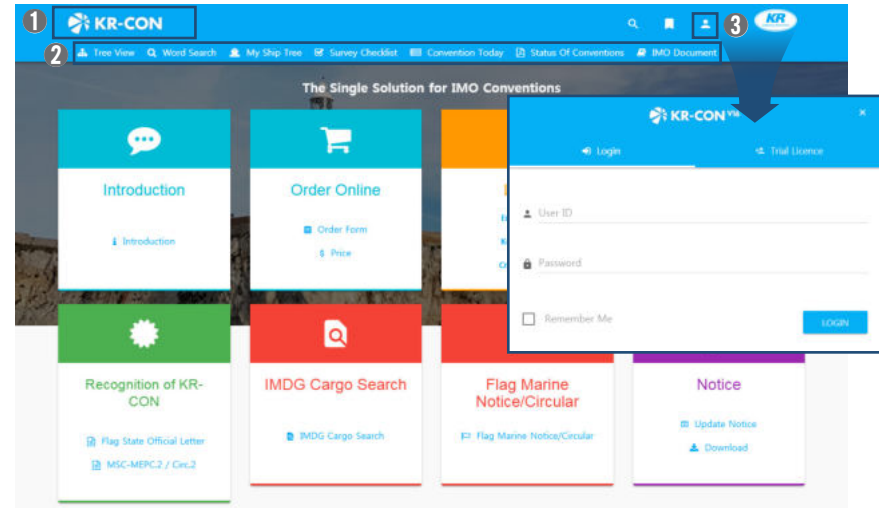


Flag Admin. Marine Notice Browser (2)

1. Click "Marine Notice" or "Technical Circular" from your wanted Flag Icon and name.
2. Choose from the list of document and click to read in PDF file

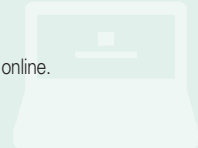


KR-CON WEB



Main Page

1. Click this button at any time to return to the main page.
2. Top menu bar.
3. Log in and out button. Input your ID & PW to access KR-CON online.



1

2

3

Tree View (1)

- All IMO documents are displayed in a tree structure so you can easily locate the relevant regulation.
1. Choose from two language options.
 2. If you know the exact number of a Resolution or Circular, use this search function to locate it quickly.
 3. KR-CON uses a directory tree structure to help you find regulations easily and quickly.

53 54

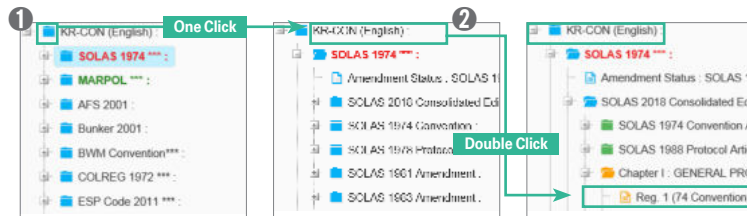
53

54

Tree View (2)

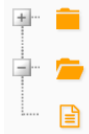
Simple search function

- Use this simple search function to locate IMO documents easily.
- If you input document number of Resolution or Circular and click "search", Relevant results are displayed on the right of the screen.



The user can browse tree view structure by one clicking the Button or double clicking the name of each folder

Icon



- : There are some sub-folder to be unfold.
- : The folder was already unfolded.
- : This is the last contents in folder.

55

56

Amendments status

This table provides brief information on when the relevant convention or code was amended.

Hyper Link

Click here to move directly to the relevant document.

Convention(International Convention for the Safety of L					
KR : Click to download Amendment status in excel format					
Amendments	Adopted		Effective date	I	II-1
	by	date			
1960 SOLAS ¹⁾	Conference	17.Jun.1960	26.May.1965		
1974 SOLAS	Conference	01.Nov.1974	25.May.1980		
1978 Protocol	Conference	17.Feb.1978	01.May.1981	2, 6, 7, 8, 10, 11, 14, 19	1, 2, 29(d)
1981 Amendments	Res.MSC.1(45)	20.Nov.1981	01.Sep.1984		1 ~ (Completed revised)
1981 Amendments to 1978 Protocol	Res.MSC.2(45)	20.Nov.1981	01.Sep.1984		29(d)(i)(1) 29(d)(i)(3)
1983 Amendments ²⁾	Res.MSC.6(48)	17.Jun.1983	01.Jul.1986		1, 3, 5, 42, 43, 49

Tree View (3)

- You can browse through the tree view structure by clicking the “” button or double clicking the name of each folder.
- Consolidated edition** : This function displays the IMO consolidated edition which will show the latest regulations or IMO conventions available. Use this function if you only want to see the latest documents.

Tree View (4)

Amendment status

This function informs you when the relevant convention or code was amended and what those amendments were.

1

2

3

4

5

The screenshot shows the KR-CON Tree View interface. On the left, a tree structure lists various SOLAS amendments and chapters. The main area displays details for 'SOLAS 1974 Amendment 2', including its title, effective date, note, and reference materials. A search bar is at the top, and a sidebar on the right contains icons for different functions like PDF download and report submission.

57 58

57

58

6

This screenshot shows the 'Reference Materials' section for Regulation 3-8. It includes a table with 'Title', 'Effective Date', 'For Ships Constructed', and 'Reference Materials'. Below the table, there is a detailed explanation of the regulation, including its purpose and application. A small image of a ship is shown at the bottom right, linked to the regulation's content.

Tree View (5)

The document in Tree view

1. Choose from two language options.
2. The simple word search function allows rapid and easy searching.
3. Amendment tracking function : Use Amendment tracking function to move directly to the previous or next Amendment.
4. Head information : This displays the essential information relating to each regulation in the document.
- 5.a) Easily change between two language options d) PDF download
b) Show/hide head information for the document e) Report any problems with KR-CON direct to us for a rapid resolution
c) Print out
6. Use hyperlinks to move directly to the relevant document.

Tree View (6)

Reference material

We have linked the text with relevant visual material such as video or photos to help you understand the IMO instruments more easily.

Tree View (7)

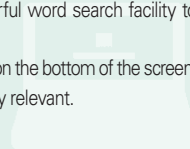
Recent

List of documents recently added to KR-CON database will be shown

Word Search

If you don't know exactly which document you need, use the powerful word search facility to help you locate it.

1. Input your key words and click "search". Relevant results are displayed on the bottom of the screen.
2. A filter function allows you to ensure the search results are absolutely relevant.
3. Topic keywords



Tree View

English
Korean

Search
My Ship Tree
Survey Checklist
Convention Today
Status Of Conventions
B&D Document

🔍
📄
👤
KR

KR-CON (English) :

SOLAS 1974 *** :

Amendment Status : SOLAS 1974

SOLAS 2019 Consolidated Edition

SOLAS 1974 Convention Article

SOLAS 1988 Protocol Articles :

Chapter 1 : GENERAL PROVISIONS

Chapter 8-1 : CONSTRUCTION

Reg. 1 (17 Amendment) : A

Reg. 2 (17 Amendment) : C

Reg. 3 (06 Amendment) : C

Reg. 3-1 (05 Amendment)

Reg. 3-2 (06 Amendment)

Reg. 3-3 (05 Amendment)

Reg. 3-4 : Emergency towing

Reg. 3-5 (09 Amendment)

Reg. 3-6 (05 Amendment)

Reg. 3-7 (05 Amendment)

Reg. 3-8 (05 Amendment)

Reg. 3-9 (06 Amendment)

Reg. 3-10 (10 Amendment)

Reg. 3-11 (10 Amendment)

Reg. 3-12 (16 Amendment)

Title	SOLAS 2005 Amend / Chapter II-1 / Reg. 3-8
Effective Date	1/1/2007
For Ships Constructed	On or after 1/1/2007
Reference Materials	double hull, single hull

Regulation 3-8

Towing and mooring equipment

(KR) Refer to IACS UI SC226 IACS Unified Interpretations (UI) for the application of SOLAS regulations to conversions of Single Hull Tanker to Double Hull Tanker or Bulk Carrier/ore Carrier

(KR) Refer to IACS UI SC212 Shipboard fittings and supporting hull structures associated with towing and mooring on conventional vessels

1 This regulation applies to ships constructed on or after 1 January 2007, but does not apply to emergency towing arrangements provided in accordance with regulation 3-4.

2 Ships shall be provided with arrangements, equipment and fittings of sufficient safe working load to enable the safe conduct of all towing and mooring operations associated with the normal operation of the ship.

3 Arrangements, equipment and fittings provided in accordance with paragraph 2 shall meet the appropriate requirements of the Administration or an organization recognized by the Administration under regulation 16.*

* Refer to MSC/Circ.1175 on Guidance on shipboard towing and mooring equipment.

4 Each fitting or item of equipment provided under this regulation shall be clearly marked with any restrictions associated with its safe operation, taking into account the strength of its attachment to the ship's structure.

(KR) This regulation was adopted by Res.MSC.134(80)

59  60

[Home](#)
[About](#)
[Contact](#)
[Help](#)

[Tree View](#)
[Word Search](#)
[My Ship Tree](#)
[Survey Checklist](#)
[Convention Today](#)
[Status Of Conventions](#)
[IMO Document](#)

Word Search

lifeboat

WITH WITH WORD

Q SEARCH

T FILTER

ALL

IBC Code ***

MODU Code ***

more CODES

SOLAS 1974 ***

IS Code

POLAR Code***

RESOLUTIONS

FSS Code ***

LSA Code ***

STCW Convention & Codes ***

CIRCULARs

HSC Code ***

MLC 2006 ***

more CONVENTIONS

IACS

FSS Code *** (1)

[FSS Code Consolidated Edition / FIRE SAFETY STANDARDS AND GUIDELINES REFERRED TO IN THE CODE] MSC/Circ.1168 : INTERIM GUIDELINES FOR THE TESTING, APPROVAL AND MAINTENANCE OF EVACUATION GUIDANCE SYSTEMS USED AS AN ALTERNATIVE TO LOW-LOCATION LIGHTING SYSTEMS

e.g. the briefing given during **lifeboat** drill, instructions on backs of ...

MORE

HSC Code *** (4)

[2006 HSC / Chapter 7 (7.1~7.17)] 7.3 : Classification of space use

spaces and enclosed promenades forming **lifeboat** and liferaft embarkation and lowering ...

MORE

[2006 HSC / Chapter 18 (18.1~18.8)] 18.4 : Manning of survival craft and supervision

MORE

My Ship Tree

Category: SOLAS

Ship Type: All Ships

Construction Date(K/A): 2/1/2018

Current Date: 2/6/2018

Gross Tonnage: GT

Freeboard Length(L): m

SEARCH SAVE LOAD

Chapter I (HSSC) : General Provisions

Part 8-4 (Reg. 19~25) : Stability management

Chapter II-2 : CONSTRUCTION - FIRE PROTECTION

Chapter III : Life-saving appliances and arrangements

Chapter IV : RADIOCOMMUNICATIONS

Chapter V : SAFETY OF NAVIGATION

Chapter VI : CARRIAGE OF CARGOES

Chapter VII : CARRIAGE OF DANGEROUS GOODS

Chapter VIII (Reg.1~12) : NUCLEAR SHIPS

Chapter IX : MANAGEMENT FOR THE SAFE OPERATION OF SHIPS

Chapter XI-1 : Special measures to enhance the safety of high speed craft

Chapter XI-2 : SPECIAL MEASURES TO ENHANCE THE SAFETY OF HIGH SPEED CRAFT

Chapter XII (Reg.1~14) : ADDITIONAL SAFETY MEASURES FOR SHIPS OF 24 METERS OR MORE IN LENGTH

Chapter XIV : SAFETY MEASURES FOR SHIPS OF 24 METERS OR MORE IN LENGTH

Search

My Ship Tree

Survey Checklist

Convention Today

Status Of Conventions

IMO Document

1

Essential input item

Title	SOLAS 1988 Amend / Chapter I (HSSC) / Reg. 2
Effective Date	2/3/2000
For Ships Constructed	On or after 2/3/2000
Retroactive	Retroactive Requirement for Existing Ships.

Regulation 2

Definitions

For the purpose of the present regulations, unless expressly provided otherwise:

(a) Regulations means the regulations contained in the annex to the present Convention.

(b) Administration means the Government of the State whose flag the ship is entitled to fly.

(c) Approved means approved by the Administration.

(d) International voyage means a voyage from a country to which the present Convention applies to a port outside such country, or conversely.

(e) A passenger is every person other than:

(f) A passenger ship is a ship which carries more than twelve passengers.

(g) A cargo ship is any ship which is not a passenger ship.

(h) A tanker is a cargo ship constructed or adapted for the carriage in bulk of liquid cargoes of an inflammable* nature.

* "Inflammable" has the same meaning as "flammable".

(i) A fishing vessel is a vessel used for catching fish, whales, seals, walrus or other living resources of the sea.

(j) A nuclear ship is a ship provided with a nuclear power plant.

61

My Ship Tree

Category: SOLAS

Ship Type: All Ships

Construction Date(K/A): 2/1/2018

Current Date: 2/6/2018

Gross Tonnage: GT

Freeboard Length(L): m

SEARCH SAVE LOAD

Chapter I (HSSC) : General Provisions

Part 8-4 (Reg. 19~25) : Stability management

Chapter II-2 : CONSTRUCTION - FIRE PROTECTION

Chapter III : Life-saving appliances and arrangements

Chapter IV : RADIOCOMMUNICATIONS

Chapter V : SAFETY OF NAVIGATION

Chapter VI : CARRIAGE OF CARGOES

Chapter VII : CARRIAGE OF DANGEROUS GOODS

Chapter VIII (Reg.1~12) : NUCLEAR SHIPS

Chapter IX : MANAGEMENT FOR THE SAFE OPERATION OF SHIPS

Chapter XI-1 : Special measures to enhance the safety of high speed craft

Chapter XI-2 : SPECIAL MEASURES TO ENHANCE THE SAFETY OF HIGH SPEED CRAFT

Chapter XII (Reg.1~14) : ADDITIONAL SAFETY MEASURES FOR SHIPS OF 24 METERS OR MORE IN LENGTH

Chapter XIV : SAFETY MEASURES FOR SHIPS OF 24 METERS OR MORE IN LENGTH

Search

My Ship Tree

Survey Checklist

Convention Today

Status Of Conventions

IMO Document

3

Previous Amendment

Most Amendment

Title	SOLAS 1988 Amend / Chapter I (HSSC) / Reg. 2
Effective Date	2/3/2000
For Ships Constructed	On or after 2/3/2000
Retroactive	Retroactive Requirement for Existing Ships.

Regulation 2

Definitions

For the purpose of the present regulations, unless expressly provided otherwise:

(a) Regulations means the regulations contained in the annex to the present Convention.

(b) Administration means the Government of the State whose flag the ship is entitled to fly.

(c) Approved means approved by the Administration.

(d) International voyage means a voyage from a country to which the present Convention applies to a port outside such country, or conversely.

(e) A passenger is every person other than:

(f) A passenger ship is a ship which carries more than twelve passengers.

(g) A cargo ship is any ship which is not a passenger ship.

(h) A tanker is a cargo ship constructed or adapted for the carriage in bulk of liquid cargoes of an inflammable* nature.

* "Inflammable" has the same meaning as "flammable".

(i) A fishing vessel is a vessel used for catching fish, whales, seals, walrus or other living resources of the sea.

(j) A nuclear ship is a ship provided with a nuclear power plant.

Some of the requirements which are to be applied retroactively to existing ships are categorized in the lowest level folder in each chapter of Convention.

My Ship Tree (1)

IMO instruments are applied to ships according to their type, construction date and other parameters.

1. My Ship Tree will deliver the specific regulations which are relevant to the vessel information you have input (such as ship type and/or construction date).

* asterisk: This is for essential item which you must input.

2. Click the "search" button once you have entered the essential information to see the results displayed at the bottom left corner of the screen.

My Ship Tree (2)

3. Retrospective requirements

Requirements which are to be applied retrospectively to existing ships are categorized in the lowest level folder in each chapter of the convention as "Retrospective Requirements".

Information Input Space

Search: My Ship Tree Survey Checklist Convention Today Status Of Conventions IMO Document

ALL SC SE SR

Search Result Survey Checklist for SC Initial Survey

Ship's particular Report No :

Name of Ship	Incon		
Class Number (XR)			
Ship Type	All Ships		
Construction Date (K/L)	2/1/2018	Current Date	2/6/2018
Gross Tonnage	GT	Deadweight Tonnage	dwt
Freeboard length	m	Overall length	m
UMA	<input checked="" type="checkbox"/> Yes <input type="checkbox"/> No	Flag	

Navigation bridge

1. Alternative design and arrangements :
examining, where applicable, the alternative design and arrangements for machinery or electrical installations, or fire safety, in accordance with the test and inspection requirements, if any, specified in the approved documentation
(SOLAS 2006 Amend / Chapter 3-1 / Reg. 55) (SOLAS 1999/2000 Amend / Chapter 3-2 / Reg. 17)

2. Cargo Securing Manual

Kind of Survey

☒ Initial Survey
☐ Annual Survey (AS/PS)
☐ Intermediate Survey (IS/PS)
☐ Renewal Survey (RS)

Location of Equipment/ Arrangement

☒ Navigation bridge ☒ Engine room
☒ Accommodation ☒ Cargo area

Kind of Certificate

☒ SC ☐ IOPP ☐ IAPP ☐ ILL
☒ SE ☐ ISPP ☐ IBC ☐ PS
☒ SR ☐ IGPP ☐ IGC ☐ BWB

63

64

1 **Survey Checklist**

* Name of ship
Class Number(XR)
Ship Type
Construction Date(K/L)

2 * Date of Enquiry 2/6/2018
Deadweight Tonnage
Freeboard Length
Overall Length

3 **Kind of Survey**
☒ Initial Survey
☐ Annual Survey (AS/PS)
☐ Intermediate Survey (IS/PS)

4 **Location of Equipment/ Arrangement**
☒ Navigation bridge ☒ Engine room
☒ Accommodation ☒ Cargo area

5 **Kind of Certificate**
☐ SC ☐ IOPP ☐ IAPP ☐ ILL
☐ SE ☐ ISPP ☐ IBC ☐ PS
☐ SR ☐ IGPP ☐ IGC ☐ BWB
☐ ILL

6 **Latest Amendment**
☐ Latest Amendment

It includes a series of mandatory boxes which are composed of the ship name, Class number, ship type and date on which the keel was laid.

Enter optional, additional information here to create a more detailed checklist.

By selecting a Criteria Selection, the user can find a convention reference retrieved by the selected criteria based on the;

- Kind of survey
- Location of Equipment/Arrangement
- Kind of Certificate

This button clears existing search criteria to enable you to make a new search.

Survey Checklist (1)

Checklist function


The "Survey Checklist" delivers an abstract of the requirements applicable to specific ships based on Res.A.1053(27), as amended by Res.A.1076(28)/A.1104(29). Once a ship's particulars are input, survey checklists are created for SC, SE, SR, PS, IOPP, ILL, IBC, IGC, IGPP, ISPP and IAPP for initial and periodical surveys.

* asterisk : This is for essential items which you must input to create a checklist.


Survey Checklist (2)


This page provides a series of boxes for inputting the ship's information and check boxes for selecting the criteria under which the inspection will be carried out.

* Name of ship KR-CON

Class Number(KR) 

* Ship Type All Ships

* Construction Date(K/L) 2/1/2018 

* Date of Enquiry 2/6/2018 

Gross Tonnage GT


Deadweight Tonnage DWT


Freeboard Length m

Overall Length m

UMA ☒ Yes ☐ No

Name of Ship & Ship Type

* Construction Date(K/L) 2/1/2018 

* Date of Enquiry 2/6/2018 

Calendar view for February 2018:

S	M	T	W	T	F	S
3	28	29	30	31	1	2
4	5	6	7	8	9	10
11	12	13	14	15	16	17
18	19	20	21	22	23	24
25	26	27	28	1	2	3
4	5	6	7	8	9	10

Kind of Survey: ☒ Initial Survey

Survey Checklist

My Ship Tree | Survey Checklist | Convention Today | Status Of Conventions | IMO Document

1. Select certificate type: ALL | SC | IOPP | POLAR

2. Ship's particular

Ship's particular		Report No :	
Name of Ship	KR-CON		
Class Number (KR)			
Ship Type	All Ships		
Construction Date (K/L)	2/1/2018	Current Date	2/6/2018
Gross tonnage	GT	Deadweight tonnage	dwt
Freeboard length	m	Overall length	m
UMA	<input checked="" type="radio"/> Yes <input type="radio"/> No	Flag	

3. Navigation bridge

4. 1. Completion of the initial survey

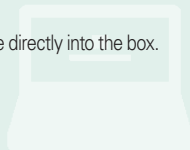
For compliance with Part I-A of the International Code for Ships Operating in Polar Waters the completion of the initial survey should consist of:

after a satisfactory survey issuing the Polar Ship Certificate and its associated Record of Equipment.

Survey Checklist (3)

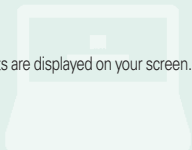
Date input

Dates can be selected by clicking the calendar icon or by entering a date directly into the box.
The asterisked(*) boxes – access a checklist by inputting essential information

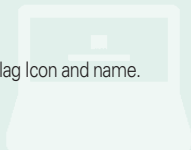


Survey Checklist (4)





1. Access KR-CON website
2. Click "IMDG" Cargo Search Program Icon
3. Input "UN No" or "Proper Shipping Name(PSN)" and click "search". Relevant results are displayed on your screen.
4. Structure of the Dangerous Goods List.
5. Move to Search Result List.
6. Click the hyperlinks to move directly to the relevant document.
7. Download a Dangerous Goods List.

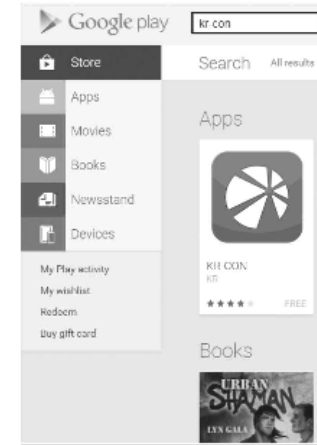


1. Access KR-CON website
2. Click Flag Administration Marine Notice Browser
3. Click "Marine Notice" or "Technical Circular" from your wanted Flag Icon and name.
4. Choose from the list of document and click to read in PDF file

KR-CON APP



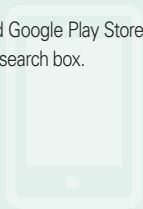
Apple App Store(iOS)



Google Play Store(Android OS)

Download KR-CON App

The App version of KR-CON is now available at the App store (iOS) and Google Play Store (Android OS) for smart devices by entering the keyword "kr-con" in the search box.





Login page

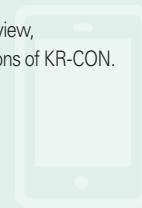
- Enter your ID & PW and click the “LOGIN” button.
- Your web ID & PW will give you access to the KR-CON App.
- If you have KR-CON web ID & PW, you can access to the KR-CON App at no additional cost. But the App version is not sold separately.

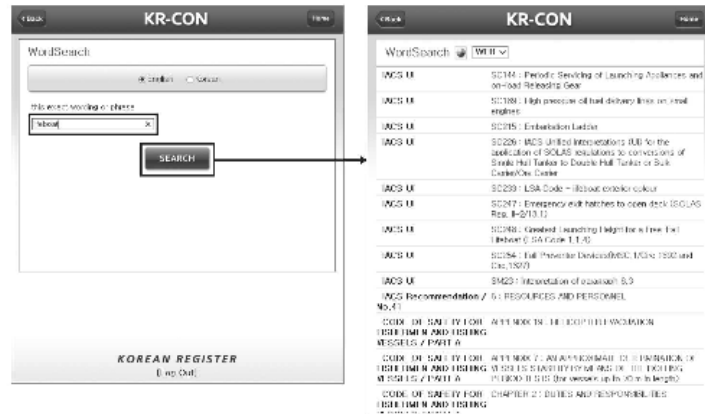
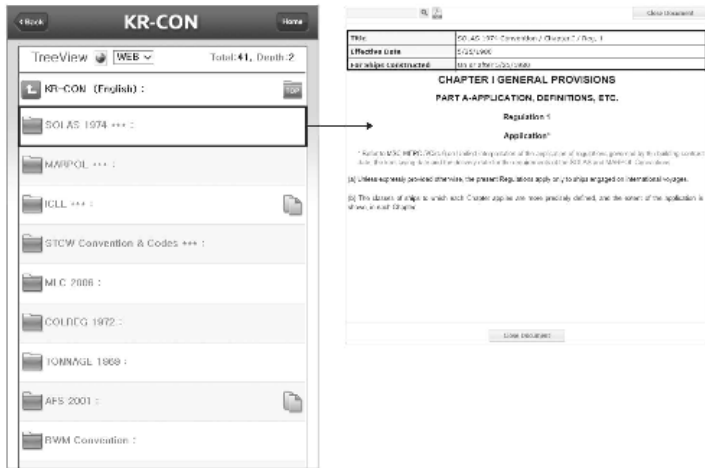


Main Page



With the exception of “Convention Today”, the App version comprises Tree view, Word Search, My Ship Tree and Survey Checklist. These are the main functions of KR-CON.

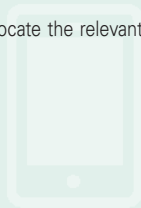




Word Search Results

Tree View

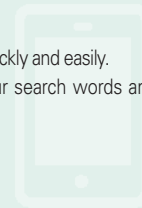
All IMO documents are displayed in a tree structure so you can easily locate the relevant regulation.



Word Search

Word Search Function

- Use KR-CON's powerful search engine to locate the relevant document quickly and easily.
- Your keywords and click the "Search" key. Documents containing your search words are displayed on the right of the screen.



KR-CON

MyShip Tree

Category: SC

Ship Type: GT Tugboat

Construction Date: 15/01/2000

Current Date: 15/12/2014

Gross Tonnage: 100

Ship Length: 10

SEARCH

KOREAN REGISTER
(Reg Out)

MyShip Tree **WEB** Total: 12, Depth: 1

- Chapter I (HSSC) : General Provisions
- Chapter II-1 : CONSTRUCTION – STRUCTURE, SUBDIVISION AND STABILITY, MACHINERY AND ELECTRICAL INSTALLATIONS
- Chapter II-2 : CONSTRUCTION – FIRE PROTECTION, FIRE DETECTION AND FIRE EXTINCTION
- Chapter III : LIFE-SAVING APPLIANCES AND ARRANGEMENTS
- Chapter IV : RADIOCOMMUNICATIONS
- Chapter V : SAFETY OF NAVIGATION
- Chapter VI : CARRIAGE OF CARGOES
- Chapter VII : CARRIAGE OF DANGEROUS GOODS
- Chapter IX : MANAGEMENT FOR THE SAFE OPERATION OF SHIPS
- Chapter XI-1 : SPECIAL MEASURES TO ENHANCE MARITIME SAFETY

My Ship Tree Search Results

KR-CON

Survey Checklist

English Korean Chinese

Name of ship: Korean Register

Class Number (GR): 100

Ship type: GT Tugboat

Construction Date: 15/01/2000

Date of Expiry: 15/12/2014

Gross Tonnage: 100

Deadweight Tonnage: 100

Freeboard Length: 10

Overall Length: 10

LVL: 100

Kind of Survey: Annual Survey (A&P), Comprehensive Survey (C&P), Renewal Survey (R&P)

Location of Endorsement: Navigation bridge, Main engine, Accommodation, Cargo area

Kind of Certificate: ISG, ISPP, ILL, IGP, IIS, IIP, IIS, IIP

SEARCH

Survey Checklist for SC Annual Survey (A&P)

Name of ship: Korean Register

Gross Tonnage: 100

Deadweight Tonnage: 100

Freeboard Length: 10

Overall Length: 10

LVL: 100

Navigation bridge

1. Measuring booklet: confirming that the measuring booklet is on board and that the measuring information is displayed on the measuring booklet (Chapter II-1 / Part 23 (INSTRUCTIONS FOR CONVENTION SURVEY / Chapter II / Part 1 / Chapter 1 / 2.1.1) (INSTRUCTIONS FOR CONVENTION SURVEY / Chapter II / Part 1 / Chapter 2 / 2.1.1))

2. Stability information: confirming that the stability information, including dynamic stability, is on board and that the dynamic stability information is on board (Chapter II-1 / Part 23 (INSTRUCTIONS FOR CONVENTION SURVEY / Chapter II / Part 1 / Chapter 1 / 2.1.1) (INSTRUCTIONS FOR CONVENTION SURVEY / Chapter II / Part 1 / Chapter 2 / 2.1.1))

3. Hull and machinery: checking that, as appropriate, the hull and machinery has been presented for survey in accordance with the continuous survey system approved by the Administration or a classification society (Chapter II-1 / Part 23 (INSTRUCTIONS FOR CONVENTION SURVEY / Chapter II / Part 1 / Chapter 1 / 2.1.1) (INSTRUCTIONS FOR CONVENTION SURVEY / Chapter II / Part 1 / Chapter 2 / 2.1.1))

Survey Checklist Search Results

My Ship Tree

- IMO instruments are applied to ships according to their type, construction data and other parameters.
 - My Ship Tree delivers regulations that are specific to the parameters you have input. You can immediately obtain a full set of IMO documents that apply specifically to your ship.
- * asterisk: This refers to essential information which you must enter.

Survey Checklist

Checklist function

The “Survey Checklist” delivers an abstract of the requirements applicable to specific ships based on Res.A.1053(27), as amended by Res.A.1076(28)/A.1104(29). Once a ship's particulars are input, survey checklists are created for SC, SE, SR, PS, IOPP, ILL, IBC, IGC, IGPP, ISPP and IAPP for initial and periodical surveys.

* asterisk: This is for essential items which you must input to create a checklist.

Confirmation Statement



KR-CON, an IMO Convention Database, contains most of the IMO major Conventions(37 Conventions including SOLAS, MARPOL, ICLL, MLC), Codes (36 Codes including IBC, IGC, IMDG, ISM, ISPS), Resolutions (Assembly, MSC, MEPC, FAL, LEG, SOLAS conference) and Circulars(MSC, MEPC, MSC-MEPC, LL.3, STCW, BC,BWM, etc.).

All electronic documents contained in KR-CON are as equivalent as the hard copy publications in accordance with 'MSC-MEPC.2/Circ.2 IMO requirements on carriage of publications on board ships'.

And the Korean Register approves of the portable USB drive enclosed within the box as an original instrument.

KR-CON USB V18 contains up-to-date texts, with all amendments of IMO instruments adopted or approved up to 2019(MSC 101st, MEPC 74th), and all database history of its former versions.

KOREAN REGISTER



INTERNATIONAL MARITIME ORGANIZATION

4 ALBERT EMBANKMENT
LONDON SE1 7SR

Telephone: 020 7587 3152
Fax: 020 7587 3210

Ref. T1/11.01



MSC-MEPC.2/Circ.2
1 June 2006

E

GENERAL MATTERS

IMO requirements on carriage of publications on board ships

1. The Maritime Safety Committee, at its eighty-first session (10 to 19 May 2006), and the Marine Environment Protection Committee, at its fifty-third session (18 to 22 July 2005), in order to give guidance on the carriage of publications on board ships, approved the IMO requirements on carriage of publications on board ships as set out in the annex.
2. The Marine Environment Protection Committee and the Maritime Safety Committee will review and update, where necessary, the list of publications contained in the appendix to the annex.
3. Member Governments are invited to bring this circular to the attention of port State Control officers, Companies and audit teams according to the ISM Code, organizations performing the ISM Code certification, ship operators and all other parties concerned.

ANNEX

IMO REQUIREMENTS ON CARRIAGE OF PUBLICATIONS ON BOARD SHIPS

1. The main purpose of this circular is to provide guidance in a concise form to Administrations, shipowners/operators, port State control officers (PSCOs), companies and audit teams according to the ISM Code and organizations performing the ISM Code certification of IMO requirements on carriage of publications. The publications explicitly required by IMO instruments to be carried on board ships are listed in the appendix.
2. IMO instruments such as the SOLAS, MARPOL, LL, COLREG and STCW Conventions deal with many operational aspects, inter alia, navigational responsibilities, safety-related training/drills on board, safe cargo handling, oil spill prevention, collision avoidance activities and watchkeeping standards. Therefore, these publications, although not expressly required by IMO instruments, may need to be carried on board in order to improve the crew's knowledge and to enhance the implementation of IMO instruments. No deficiency or non-conformity should be filed by port State control authorities and/or ISM auditors against ships not carrying such publications on board unless otherwise required by the ship's Safety Management System (SMS) manual.

3. In circumstances where copies of national regulations incorporating the provisions of the required instruments are provided on board, relevant publications need not be carried. Similarly, nothing in the IMO requirements preclude ships from carrying publications required by IMO instruments and published by Administrations.

4. The publications may be carried in the form of electronic media such as CD-ROM in lieu of hard copies. Acceptable publications in electronic form should be those issued by IMO or an Administration or a body authorized by an Administration to ensure correctness of their contents and to safeguard against illegal copying. A medium could either contain a publication or as many publications as possible. In any case, the media should be treated in accordance with the document control procedures in the ship's SMS including procedures for timely update.

5. Notwithstanding paragraph 4 above, the publications for emergency use, such as the International Code of Signals and the IAMSAR Manual should always be available in the form of hard copies, bearing in mind that such publications need to be readily available for use in case of emergency without being restricted to a specific place and by the availability of a computer.

APPENDIX

Publications required to be carried on board ships*

Name of publication	Required by	Applicable ship	Remarks
IBC Code	IBC, paragraph 16.2.1	Chemical Tankers	Built after 1 July 1986
BCH Code	BCH, paragraph 5.2.1	Chemical Tankers	Built before 1 July 1986
IGC Code	IGC, paragraph 18.1.3	Gas Carrier	Built after 1 July 1986
International Code of Signals**	SOLAS V/21.1	All ships	
IAMSAR Manual Volume III**	SOLAS V/21.2	All ships	
Nautical Charts & Publications	SOLAS V/19.2.1 & V/27	All ships	
Publications required by ISM Code	ISM Code, paragraphs 1.2.3 and 11.3	All ships	Required publications are those specifically mentioned to be carried by the ship's SMS manual.

Note: * All publications on board ships, regardless of format, should be the latest editions or duly corrected up to date. In case where copies of national regulations incorporating the provisions of the required instruments are provided on board, publications of such instruments need not be carried on board.

** These publications for emergency use should always be available on board ships in the form of hard copy.